

# THE MATHEW

1844 LIGHTNER ROAD



Exterior B

2,093 sq. ft.

3 Bedrooms

2 Full Baths

1 Half Bath

2 Car Garage

**Meg S.**



### **Truly treated us like family!!!**

We enjoyed every part of the home building process. It was amazing! Our builder was always keeping us informed and really went above and beyond to ensure that we love our home. Our warranty rep is outstanding and continues to take care of our every need. I couldn't have asked for a better experience. Our builder and warranty rep continue to be there for us as a family. While our interactions with the DW Family have been highly professional, we are also lucky enough to be able to call them some of our greatest friends! Wouldn't change a thing!

**Shane**



### **We're living our fairytale thanks to David Weekley**

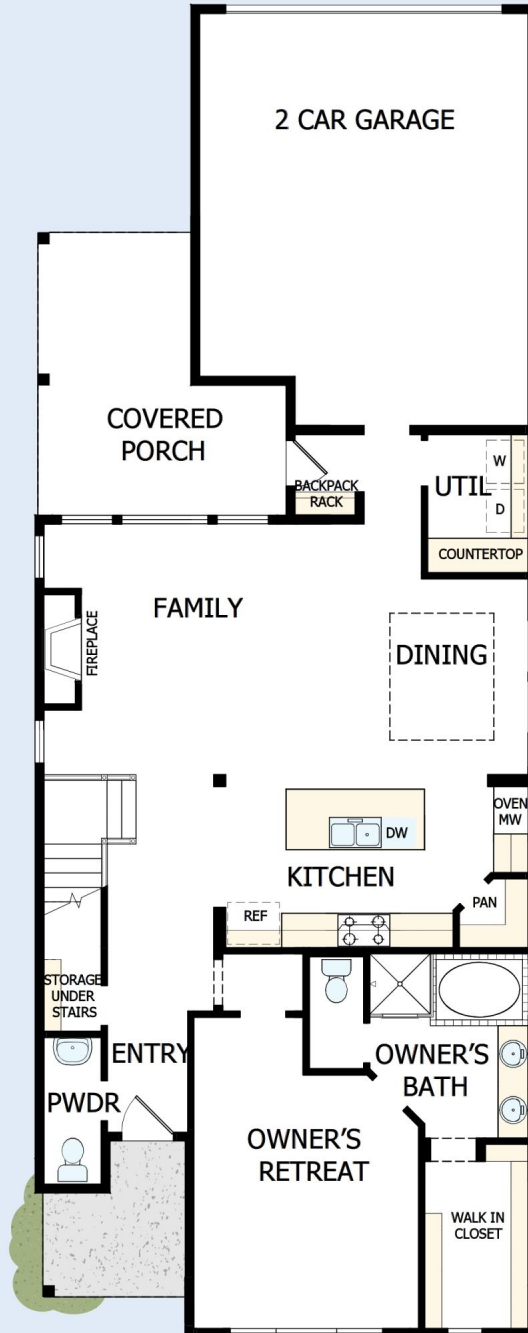
We can't say enough about the level of quality and care we received while building our home. Our builder was with us every step of the way to make sure our every need and desire was being met! The team truly went above and beyond at every turn to give us the home of our dreams! We will definitely recommend David Weekley to anyone looking to build a new home!

**David Weekley  
Homes**

# THE MATHEW

1844 LIGHTNER ROAD

2,093 sq. ft. • 3 Bedrooms • 2 Full Baths • 1 Half Bath • 2 Car Garage



19710032 DAL

5/30/2024

DavidWeekleyHomes.com

# THE MATHEW

1844 LIGHTNER ROAD



See a David Weekley Homes Sales Consultant for details. Prices, plans, dimensions, features, specifications, materials, and availability of homes or communities are subject to change without notice or obligation. Illustrations are artist's depictions only and may differ from completed improvements. Copyright © 2024 David Weekley Homes - All Rights Reserved. Van Alstyne, TX



**DavidWeekleyHomes.com**

