

# THE BELIZE

11735 GRAMINA WAY



Exterior B

2,492 sq. ft.

4 Bedrooms

2 Full Baths

1 Half Bath

2 Car Garage

## Shane



### We're living our fairytale thanks to David Weekley

We can't say enough about the level of quality and care we received while building our home. Our builder was with us every step of the way to make sure our every need and desire was being met! The team truly went above and beyond at every turn to give us the home of our dreams! We will definitely recommend David Weekley to anyone looking to build a new home!

## Perez Family



### Best Homebuying Experience Ever

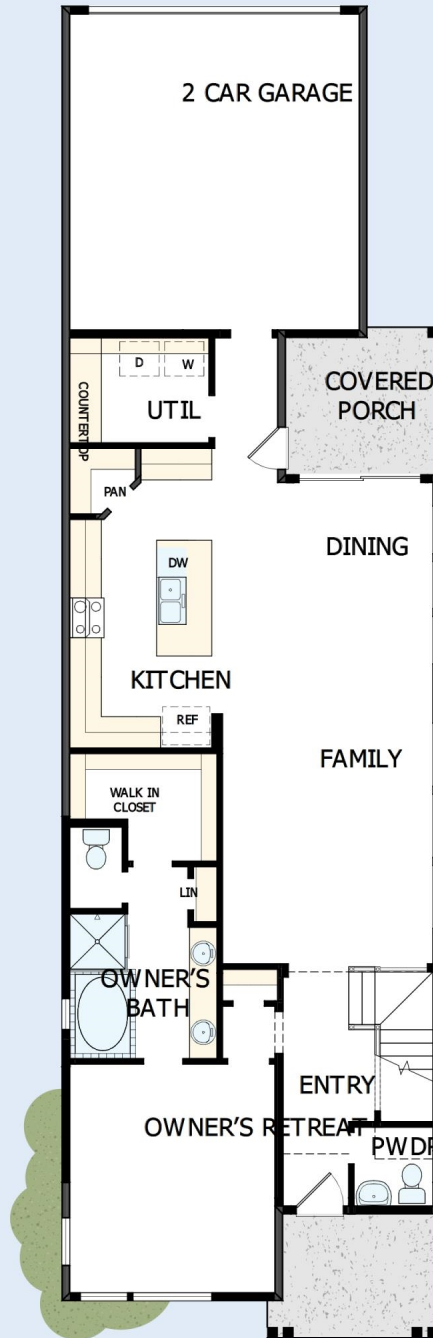
We have had several homes built in the past by several homebuilders. Our experience with David Weekley was the best we have ever had. The attention to detail and the customer service were exceptional. Both our sales person and Project Manager kept us well informed and treated us like family. Thanks David Weekley

David Weekley  
Homes

# THE BELIZE

11735 GRAMINA WAY

2,492 sq. ft. • 4 Bedrooms • 2 Full Baths • 1 Half Bath • 2 Car Garage



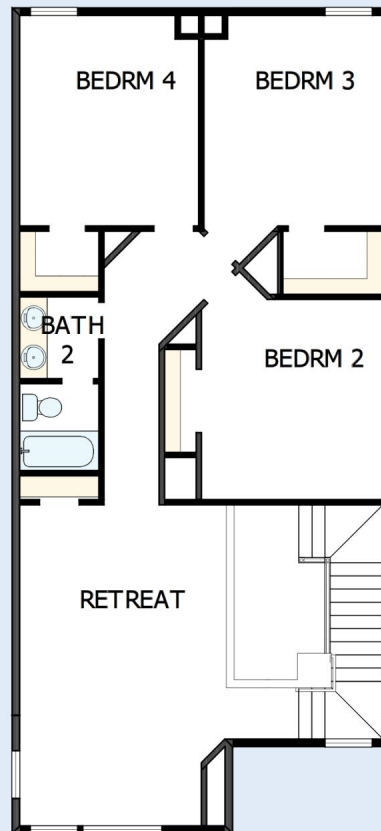
14880021 HOU

11/26/2024

DavidWeekleyHomes.com

# THE BELIZE

11735 GRAMINA WAY



See a David Weekley Homes Sales Consultant for details. Prices, plans, dimensions, features, specifications, materials, and availability of homes or communities are subject to change without notice or obligation. Illustrations are artist's depictions only and may differ from completed improvements. Copyright © 2024 David Weekley Homes - All Rights Reserved. Humble, TX

**DavidWeekleyHomes.com**

