

THE FLOWERDALE

75497 BANYAN WAY



Exterior B

1,972 sq. ft.

3 Bedrooms

2 Full Baths

2 Car Garage

Shane



We're living our fairytale thanks to David Weekley

We can't say enough about the level of quality and care we received while building our home. Our builder was with us every step of the way to make sure our every need and desire was being met! The team truly went above and beyond at every turn to give us the home of our dreams! We will definitely recommend David Weekley to anyone looking to build a new home!

Rich C.



Wonderful Experience!

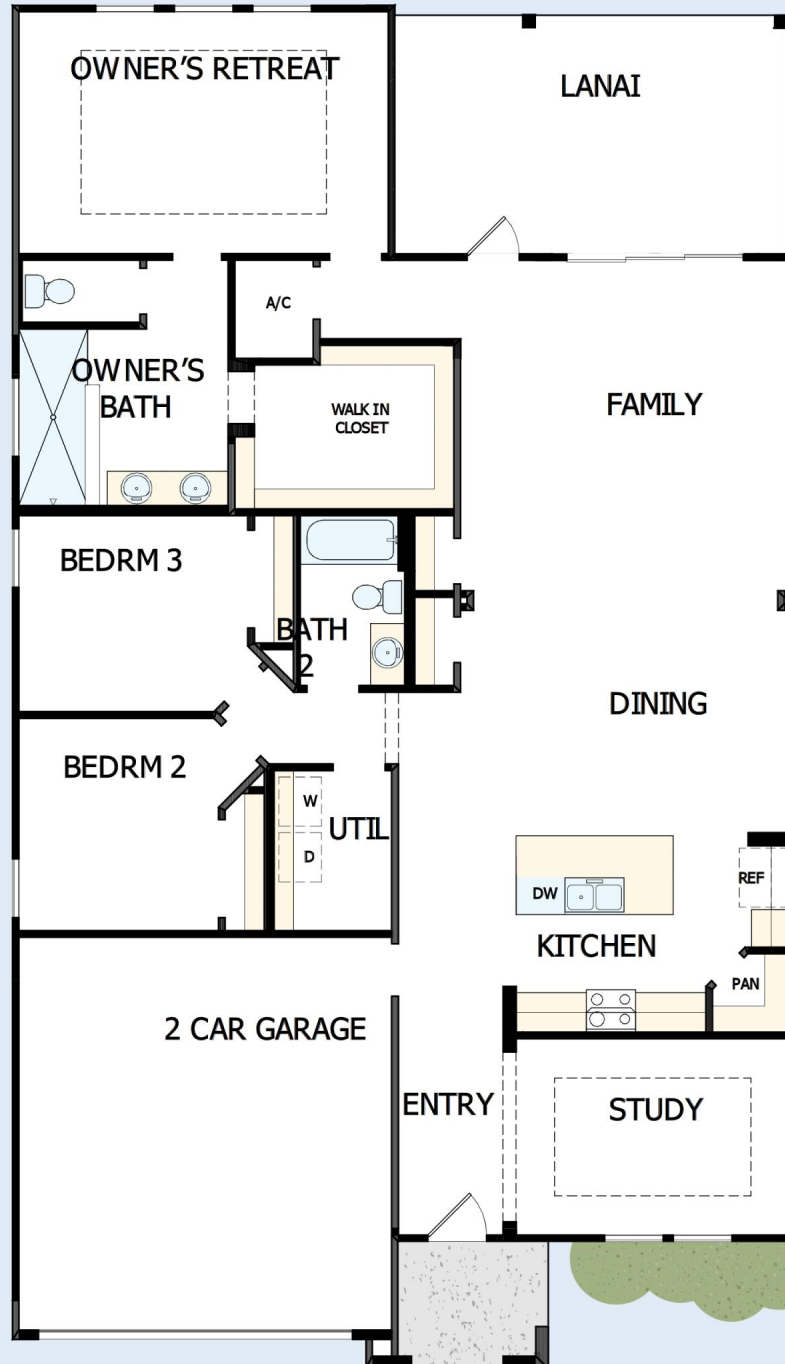
If there is anything that sets David Weekley apart from other builders it is their customer service. I felt like a member of the family from the first time I walked into the model, to when I received my keys and saw the wonderful housewarming presents that were left for me, up to the present when I see my salesman in the neighborhood. I felt like they really took the time to understand what I was looking for and then came through with my dream home. I would highly recommend David Weekley to anyone looking to buy and/or build a home.

David Weekley
Homes

THE FLOWERDALE

75497 BANYAN WAY

1,972 sq. ft. • 3 Bedrooms • 2 Full Baths • 2 Car Garage



49200012 JAC

11/8/2024

See a David Weekley Homes Sales Consultant for details. Prices, plans, dimensions, features, specifications, materials, and availability of homes or communities are subject to change without notice or obligation. Illustrations are artist's depictions only and may differ from completed improvements. Copyright © 2024 David Weekley Homes - All Rights Reserved. Yulee, FL

DavidWeekleyHomes.com

