

THE ALDERMAN

522 LAUREL PARK DR



Exterior A

2,417 sq. ft.

3 Bedrooms

3 Full Baths

1 Half Bath

2 Car Garage

Chelsea



Incredible Experience, Incredible Home!

We trusted the team from Day 1 and couldn't have asked for a better experience. The attention to detail was fantastic, and we felt as if the DWH team had a personal interest in the success of our home. The process was well defined and every team member set very clear expectations. We love every inch of our home, and we'd definitely recommend DWH!

Perez Family



Best Homebuying Experience Ever

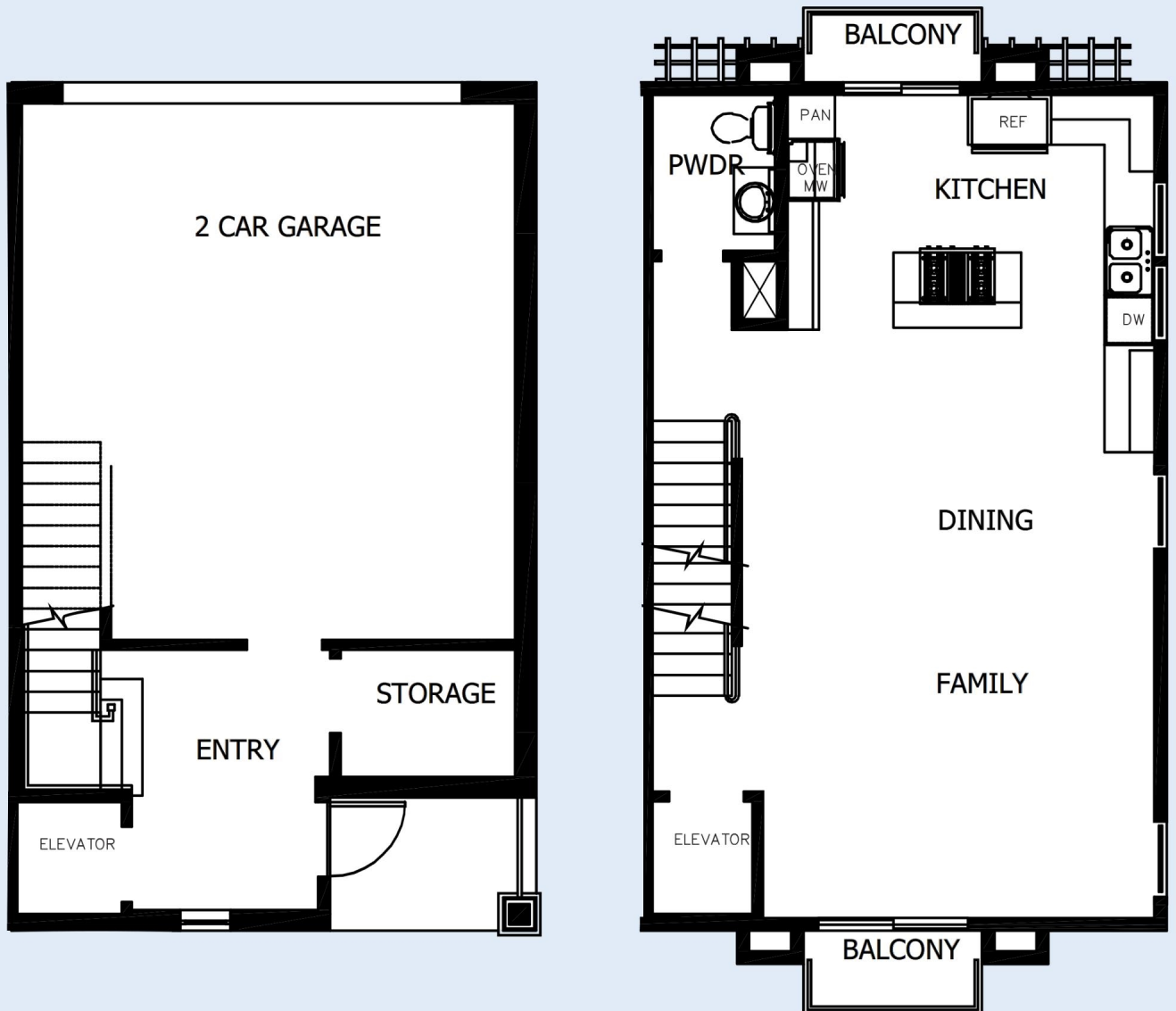
We have had several homes built in the past by several homebuilders. Our experience with David Weekley was the best we have ever had. The attention to detail and the customer service were exceptional. Both our sales person and Project Manager kept us well informed and treated us like family. Thanks David Weekley

CENTRAL LIVING
by David Weekley Homes

THE ALDERMAN

522 LAUREL PARK DR

2,417 sq. ft. • 3 Bedrooms • 3 Full Baths • 1 Half Bath • 2 Car Garage



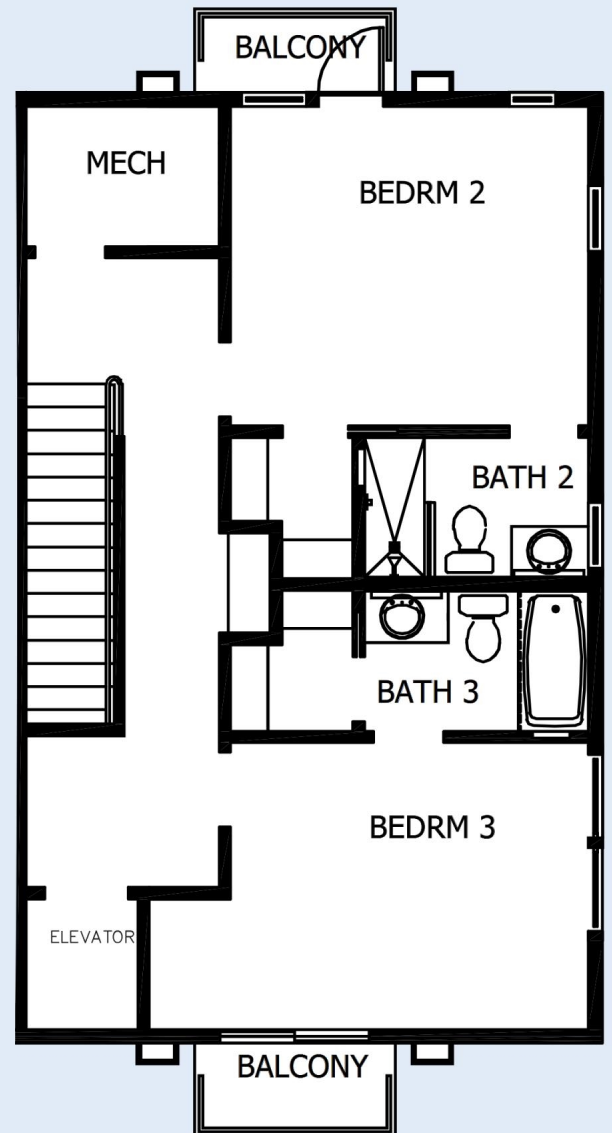
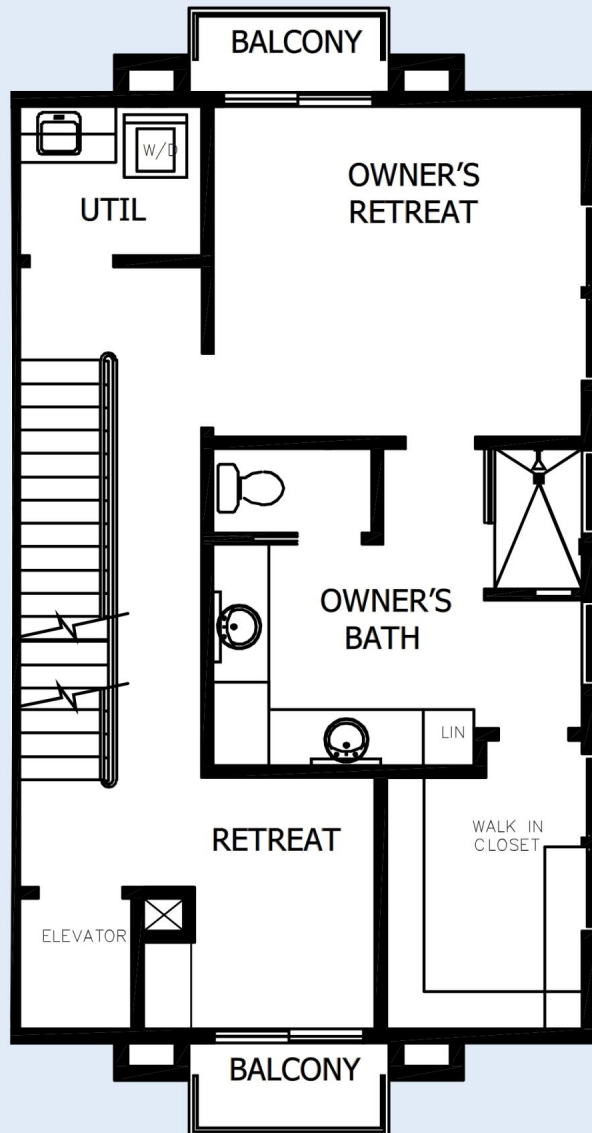
62050717 SAR

4/13/2020

CENTRAL LIVING
by David Weekley Homes

THE ALDERMAN

522 LAUREL PARK DR



See a David Weekley Homes Sales Consultant for details. Prices, plans, dimensions, features, specifications, materials, and availability of homes or communities are subject to change without notice or obligation. Illustrations are artist's depictions only and may differ from completed improvements. Copyright © 2020 David Weekley Homes - All Rights Reserved. Sarasota, FL.



CENTRAL LIVING
by **David Weekley Homes**