

THE BROSWELL

75492 BANYAN WAY



Exterior A

2,394 sq. ft.

4 Bedrooms

3 Full Baths

2 Car Garage

Meg S.



Truly treated us like family!!!

We enjoyed every part of the home building process. It was amazing! Our builder was always keeping us informed and really went above and beyond to ensure that we love our home. Our warranty rep is outstanding and continues to take care of our every need. I couldn't have asked for a better experience. Our builder and warranty rep continue to be there for us as a family. While our interactions with the DW Family have been highly professional, we are also lucky enough to be able to call them some of our greatest friends! Wouldn't change a thing!

Sandra A.



Best Builder Around

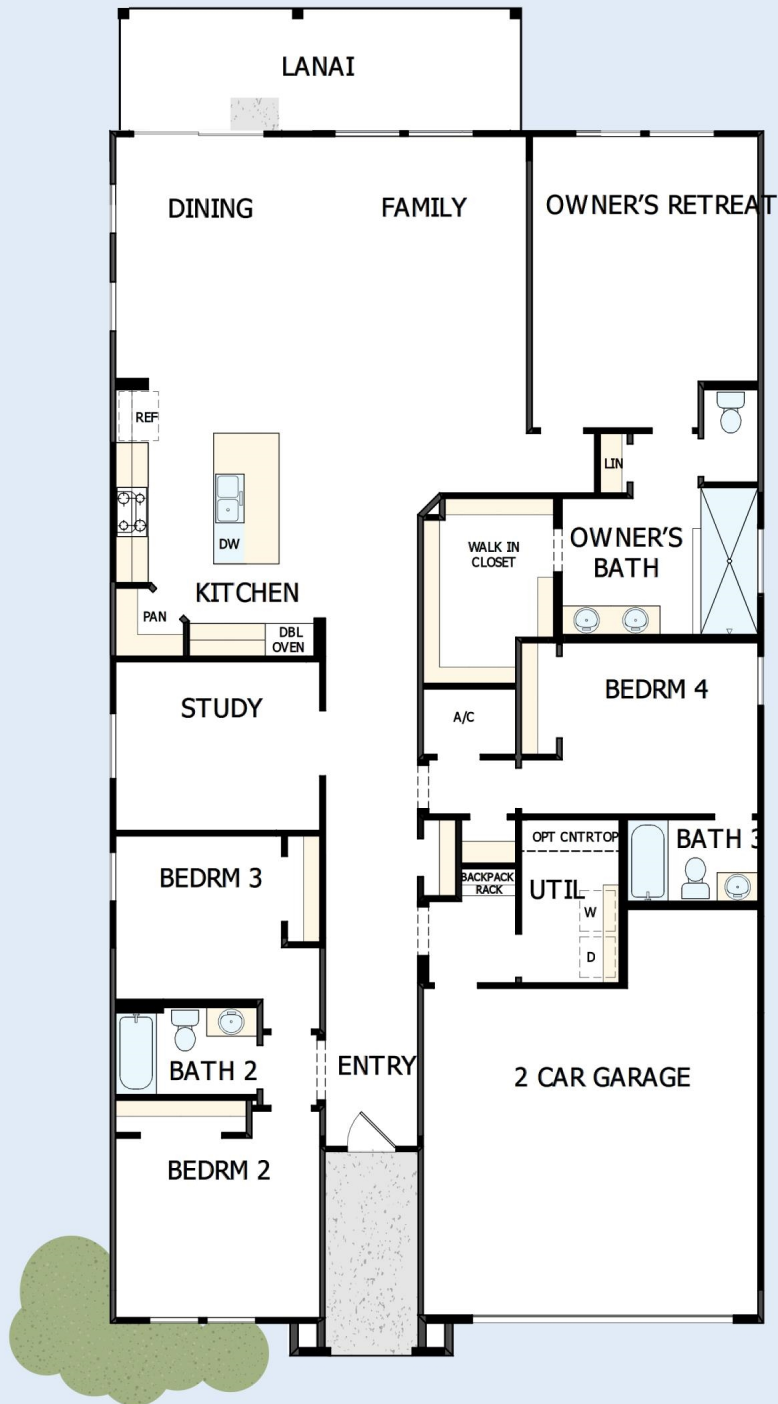
We have loved DW homes ever since our mother bought one. The quality of their work, attention to detail and willingness to respond to questions is top notch. The biggest thing we love about DW is their focus on customer service. They are not your typical builder who meets with you to get a check and forgets about you till walk thru. They are your partner through the entire process. Each step of the way they know they are building your dream house and really treat you like family. I would recommend them hands down. My husband sells real estate and has dealt with numerous builders around town. He always directs his clients to DW and signs their praises.

**David Weekley
Homes**

THE BROSWELL

75492 BANYAN WAY

2,394 sq. ft. • 4 Bedrooms • 3 Full Baths • 2 Car Garage



49200035 JAC

7/12/2024

See a David Weekley Homes Sales Consultant for details. Prices, plans, dimensions, features, specifications, materials, and availability of homes or communities are subject to change without notice or obligation. Illustrations are artist's depictions only and may differ from completed improvements. Copyright © 2024 David Weekley Homes - All Rights Reserved. Yulee, FL

DavidWeekleyHomes.com



EQUAL HOUSING OPPORTUNITY