

# THE GILEAD

11045 SHREVEPORT DRIVE



Exterior B

2,969 sq. ft.

4 Bedrooms

3 Full Baths

1 Half Bath

3 Car Garage

## Greg and Jane



### Exceptional service and experience!

We have been fortunate enough to build several new homes and this was by far the best experience that we've encountered. We actually debated whether or not we wanted to go through the home building process again or simply purchase a pre-owned home or a finished new home. So pleased we built! Our Weekley team (sales associate, design consultant and builder) was very professional, courteous, attentive, responsive and pro-active from beginning to end. They've all become our adopted kids! Great overall experience!

## Chelsea



### Incredible Experience, Incredible Home!

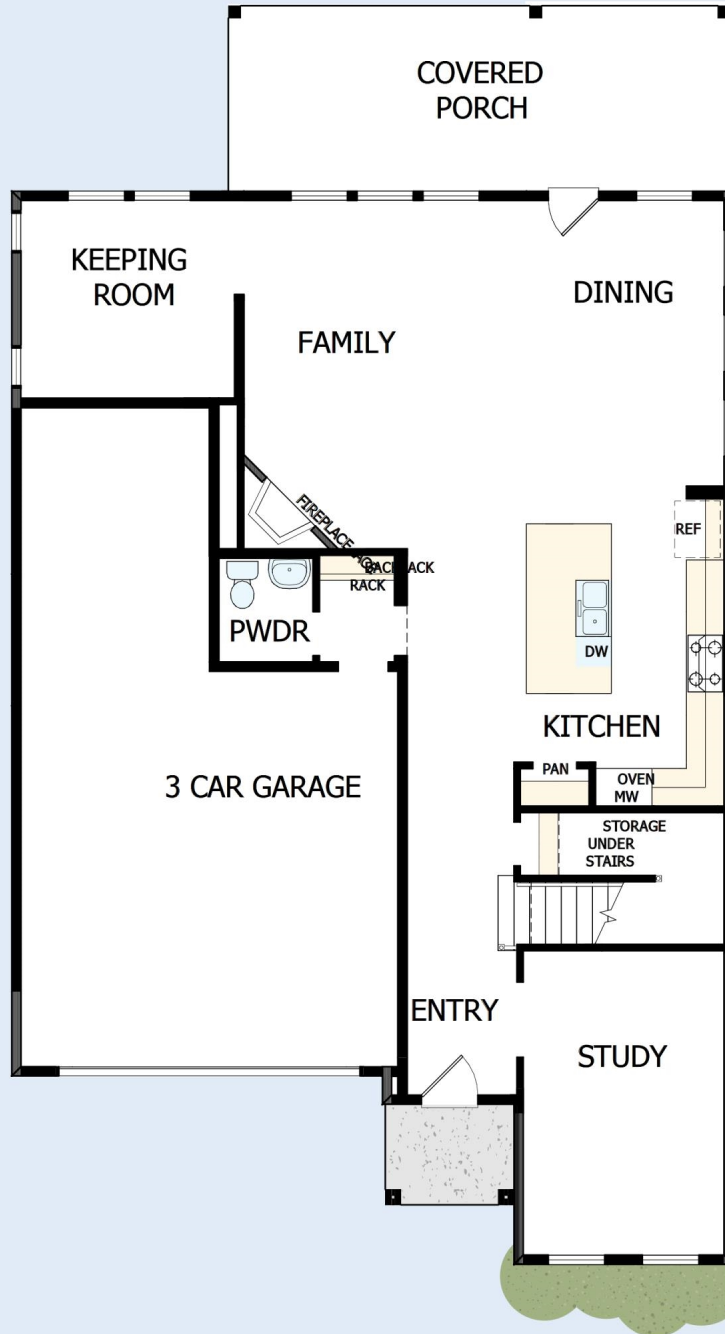
We trusted the team from Day 1 and couldn't have asked for a better experience. The attention to detail was fantastic, and we felt as if the DWH team had a personal interest in the success of our home. The process was well defined and every team member set very clear expectations. We love every inch of our home, and we'd definitely recommend DWH!

David Weekley  
Homes

# THE GILEAD

11045 SHREVEPORT DRIVE

2,969 sq. ft. • 4 Bedrooms • 3 Full Baths • 1 Half Bath • 3 Car Garage



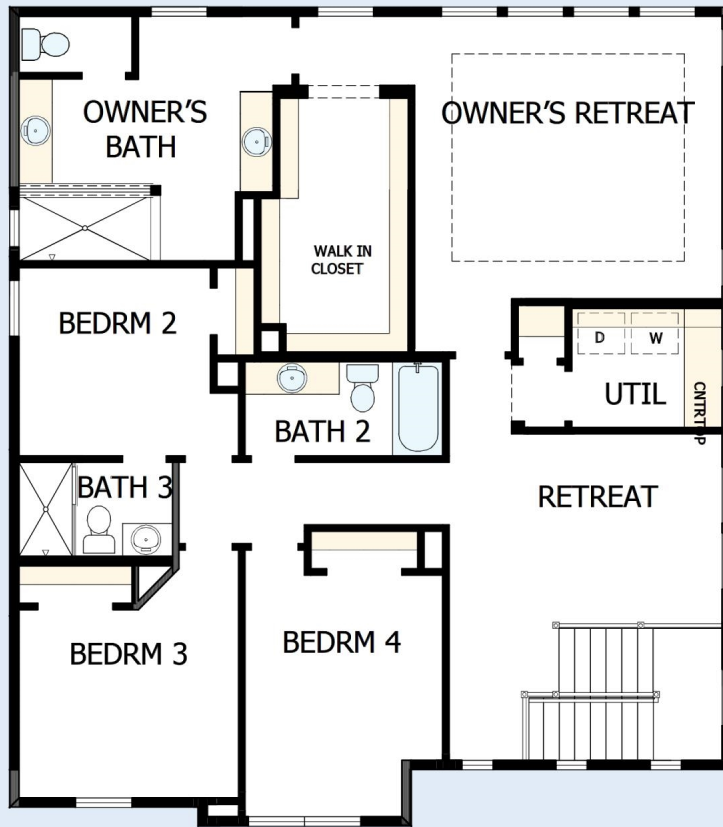
36280124 CHA

4/16/2024

DavidWeekleyHomes.com

# THE GILEAD

11045 SHREVEPORT DRIVE



See a David Weekley Homes Sales Consultant for details. Prices, plans, dimensions, features, specifications, materials, and availability of homes or communities are subject to change without notice or obligation. Illustrations are artist's depictions only and may differ from completed improvements. Copyright © 2024 David Weekley Homes - All Rights Reserved. Huntersville, NC

**DavidWeekleyHomes.com**

