

# THE WALMSLEY

2417 PLUMERIA LANE



Exterior D

3,306 sq. ft.

5 Bedrooms

4 Full Baths

2 Car Garage

## Crystal W.



### Welcome Home

My DWHome's experience has been truly 5-stars! From a floorplan concept, reserving a lot filled with dirt, the homebuilding project, to "Welcome Home", the entire process has been amazing. The team provided regular feedback and were always available to address questions and concerns. I was sold on the quality features. The entire team's availability and service has been exceptional before and after closing. Looking forward to enjoying our new home and neighbors for many years to come!

## Shane



### We're living our fairytale thanks to David Weekley

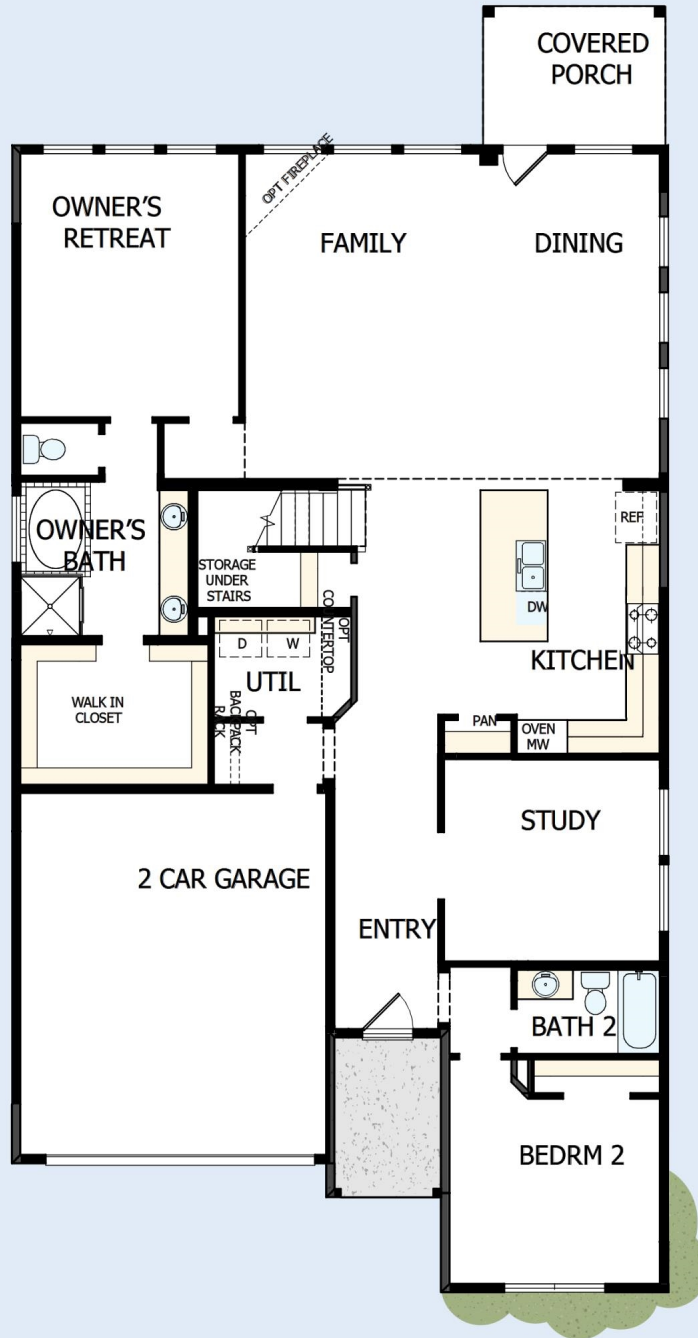
We can't say enough about the level of quality and care we received while building our home. Our builder was with us every step of the way to make sure our every need and desire was being met! The team truly went above and beyond at every turn to give us the home of our dreams! We will definitely recommend David Weekley to anyone looking to build a new home!

David Weekley  
Homes

# THE WALMSLEY

2417 PLUMERIA LANE

3,306 sq. ft. • 5 Bedrooms • 4 Full Baths • 2 Car Garage

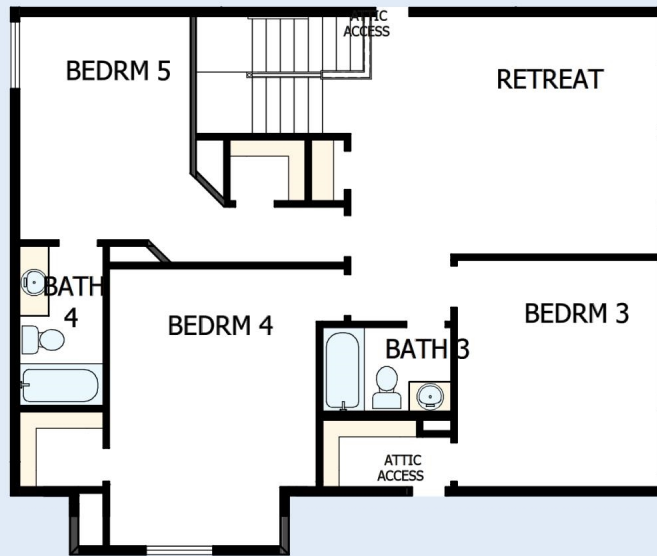


1960064 DAL

8/8/2024

# THE WALMSLEY

2417 PLUMERIA LANE



See a David Weekley Homes Sales Consultant for details. Prices, plans, dimensions, features, specifications, materials, and availability of homes or communities are subject to change without notice or obligation. Illustrations are artist's depictions only and may differ from completed improvements. Copyright © 2024 David Weekley Homes - All Rights Reserved. Celina, TX



**DavidWeekleyHomes.com**

