

THE CAVERTON CLASSIC

22 AMALIA WAY



Exterior B

2,253 sq. ft.

3 Bedrooms

2 Full Baths

1 Half Bath

3 Car Garage

Greg and Jane



Exceptional service and experience!

We have been fortunate enough to build several new homes and this was by far the best experience that we've encountered. We actually debated whether or not we wanted to go through the home building process again or simply purchase a pre-owned home or a finished new home. So pleased we built! Our Weekley team (sales associate, design consultant and builder) was very professional, courteous, attentive, responsive and pro-active from beginning to end. They've all become our adopted kids! Great overall experience!

Shane



We're living our fairytale thanks to David Weekley

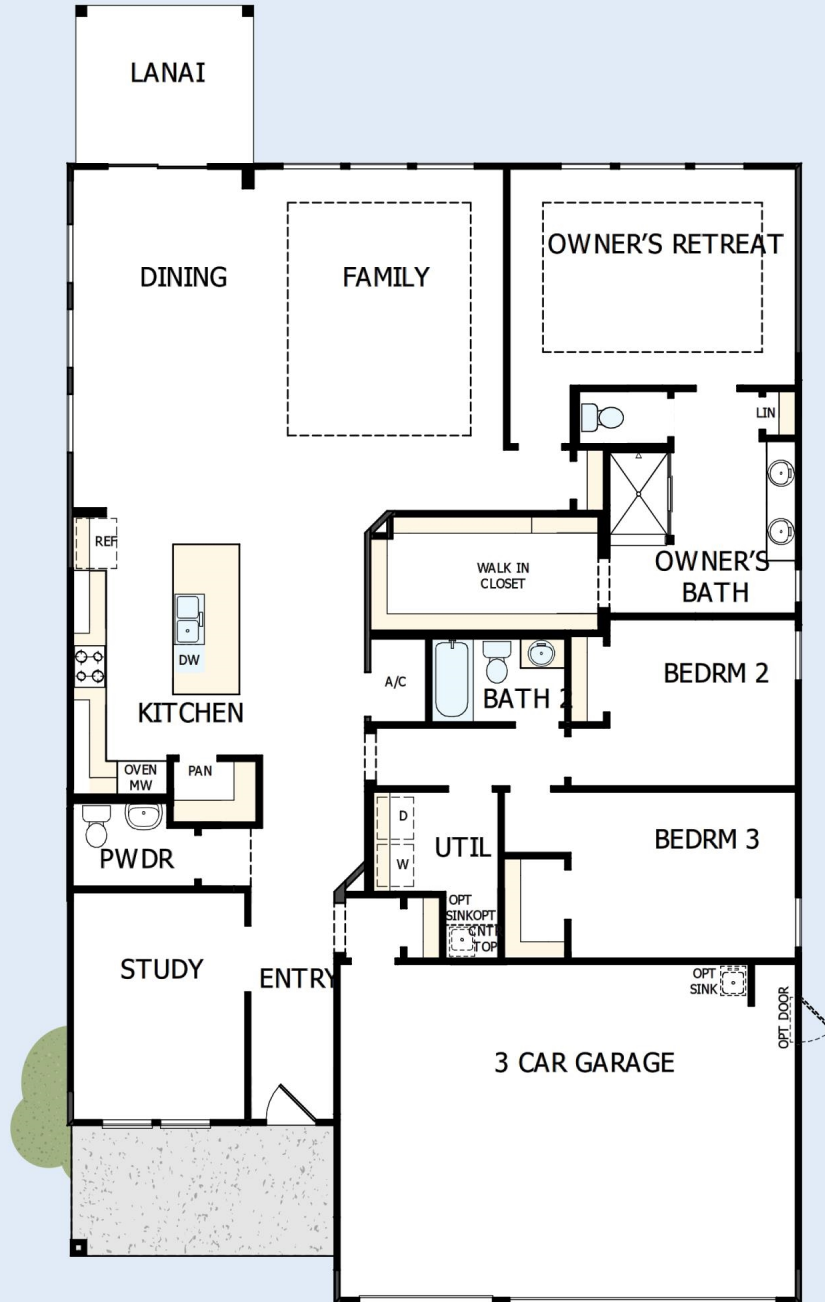
We can't say enough about the level of quality and care we received while building our home. Our builder was with us every step of the way to make sure our every need and desire was being met! The team truly went above and beyond at every turn to give us the home of our dreams! We will definitely recommend David Weekley to anyone looking to build a new home!

David Weekley
Homes

THE CAVERTON CLASSIC

22 AMALIA WAY

2,253 sq. ft. • 3 Bedrooms • 2 Full Baths • 1 Half Bath • 3 Car Garage



44680077 JAC

8/14/2024

See a David Weekley Homes Sales Consultant for details. Prices, plans, dimensions, features, specifications, material and availability of homes or communities are subject to change without notice or obligation. Illustrations are artist's depictions only and may differ from completed improvements. Copyright © 2024 David Weekley Homes - All Rights Reserved. St. Augustine, FL

DavidWeekleyHomes.com

