

# THE PINNACLE

10838 DAVIS FARMS



6290 SAN - D

## Exterior D

3,604 sq. ft.

5 Bedrooms

4 Full Baths

1 Half Bath

3 Car Garage

### Greg and Jane



#### Exceptional service and experience!

We have been fortunate enough to build several new homes and this was by far the best experience that we've encountered. We actually debated whether or not we wanted to go through the home building process again or simply purchase a pre-owned home or a finished new home. So pleased we built! Our Weekley team (sales associate, design consultant and builder) was very professional, courteous, attentive, responsive and pro-active from beginning to end. They've all become our adopted kids! Great overall experience!

### Crystal W.



#### Welcome Home

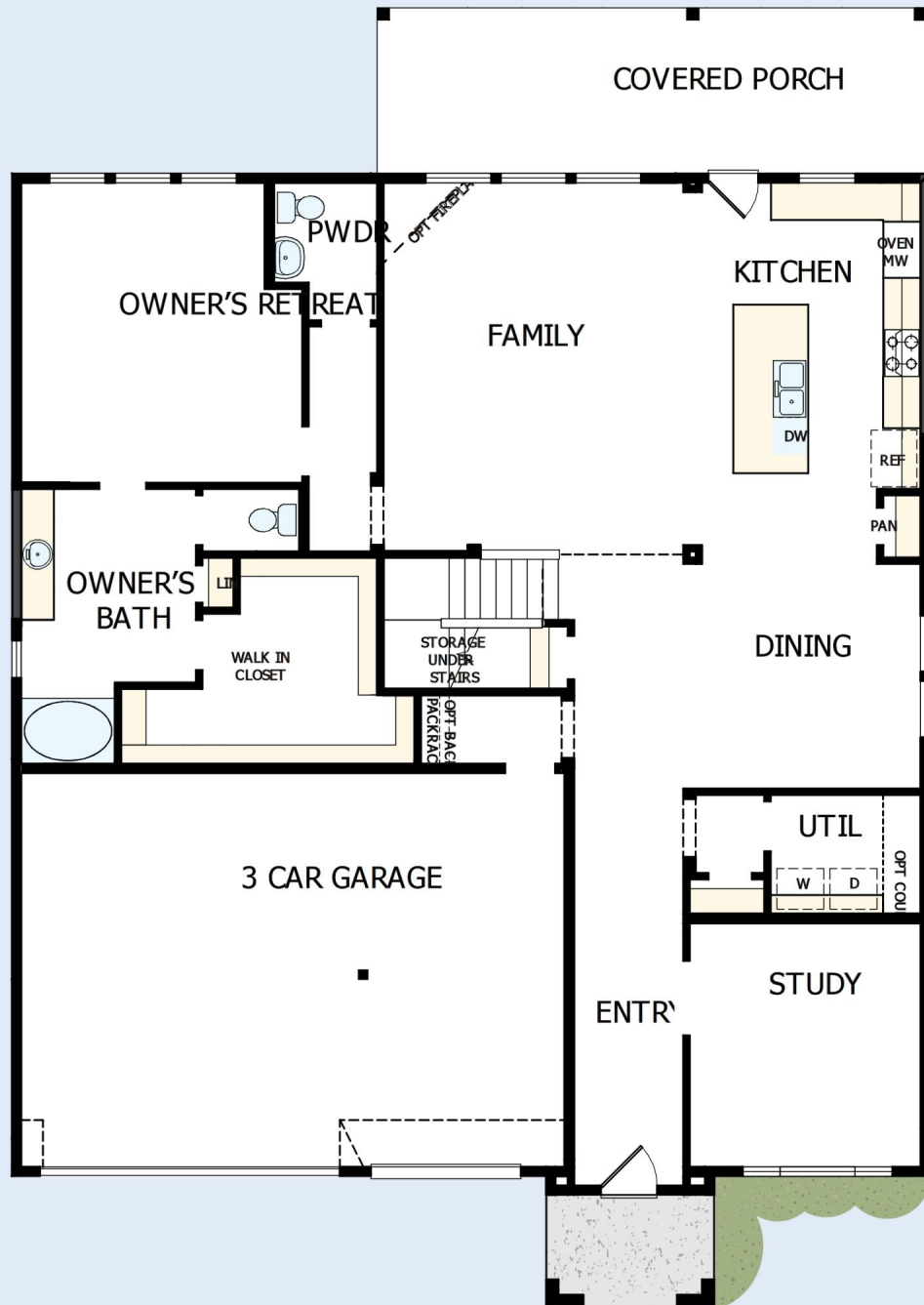
My DWHome's experience has been truly 5-stars! From a floorplan concept, reserving a lot filled with dirt, the homebuilding project, to "Welcome Home", the entire process has been amazing. The team provided regular feedback and were always available to address questions and concerns. I was sold on the quality features. The entire team's availability and service has been exceptional before and after closing. Looking forward to enjoying our new home and neighbors for many years to come!

**David Weekley  
Homes**

# THE PINNACLE

10838 DAVIS FARMS

3,604 sq. ft. • 5 Bedrooms • 4 Full Baths • 1 Half Bath • 3 Car Garage



24060057 SAN

3/14/2022

DavidWeekleyHomes.com

# THE PINNACLE

10838 DAVIS FARMS

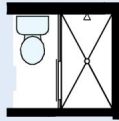


DavidWeekleyHomes.com



# THE PINNACLE

10838 DAVIS FARMS



See a David Weekley Homes Sales Consultant for details.  
Prices, plans, dimensions, features, specifications, materials,  
and availability of homes or communities are subject to  
change without notice or obligation. Illustrations are artist's  
depictions only and may differ from completed improvements.  
Copyright © 2022 David Weekley Homes - All Rights Reserved.  
San Antonio, TX

**DavidWeekleyHomes.com**

