

# THE BOSWELL II

114 LONG CREEK LANE



Exterior E

2,862 sq. ft.

4 Bedrooms

3 Full Baths

2 Car Garage

## Gigi and Papa



### THE BESTest - Better than all the rest!

What an awesome and personal family-oriented company! From touring model homes to selecting "THE ONE" just for us, the experience was delightful and amazing! The entire David Weekley team has been exceptionally wonderful and always available to address any issues we encountered. We have been amazed and impressed by the "Service after the Sale" approach by the David Weekley staff. We would recommend David Weekley homes to anyone. We feel like we are an important member of the Weekley family!

## Rich C.



### Wonderful Experience!

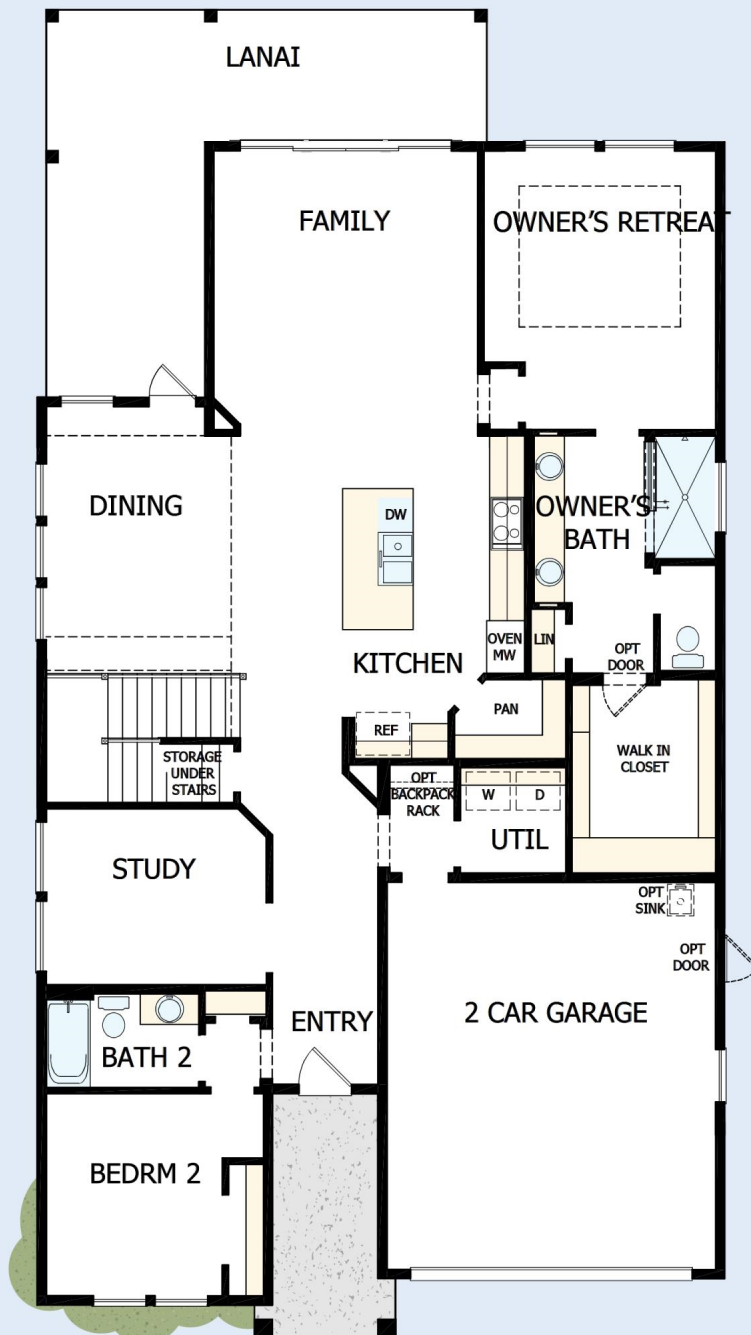
If there is anything that sets David Weekley apart from other builders it is their customer service. I felt like a member of the family from the first time I walked into the model, to when I received my keys and saw the wonderful housewarming presents that were left for me, up to the present when I see my salesman in the neighborhood. I felt like they really took the time to understand what I was looking for and then came through with my dream home. I would highly recommend David Weekley to anyone looking to buy and/or build a home.

David Weekley  
Homes

# THE BOSWELL II

114 LONG CREEK LANE

2,862 sq. ft. • 4 Bedrooms • 3 Full Baths • 2 Car Garage



49100093 JAC

6/28/2022

DavidWeekleyHomes.com

# THE BOSWELL II

114 LONG CREEK LANE



See a David Weekley Homes Sales Consultant for details. Prices, plans, dimensions, features, specifications, materials, and availability of homes or communities are subject to change without notice or obligation. Illustrations are artist's depictions only and may differ from completed improvements. Copyright © 2022 David Weekley Homes - All Rights Reserved. St. Augustine, FL

**DavidWeekleyHomes.com**