

THE LANDOVER

6232 ESCARPMENT DRIVE



Exterior A

2,770 sq. ft.

4 Bedrooms

3 Full Baths

2 Car Garage

Rich C.



Wonderful Experience!

If there is anything that sets David Weekley apart from other builders it is their customer service. I felt like a member of the family from the first time I walked into the model, to when I received my keys and saw the wonderful housewarming presents that were left for me, up to the present when I see my salesman in the neighborhood. I felt like they really took the time to understand what I was looking for and then came through with my dream home. I would highly recommend David Weekley to anyone looking to buy and/or build a home.

Perez Family



Best Homebuying Experience Ever

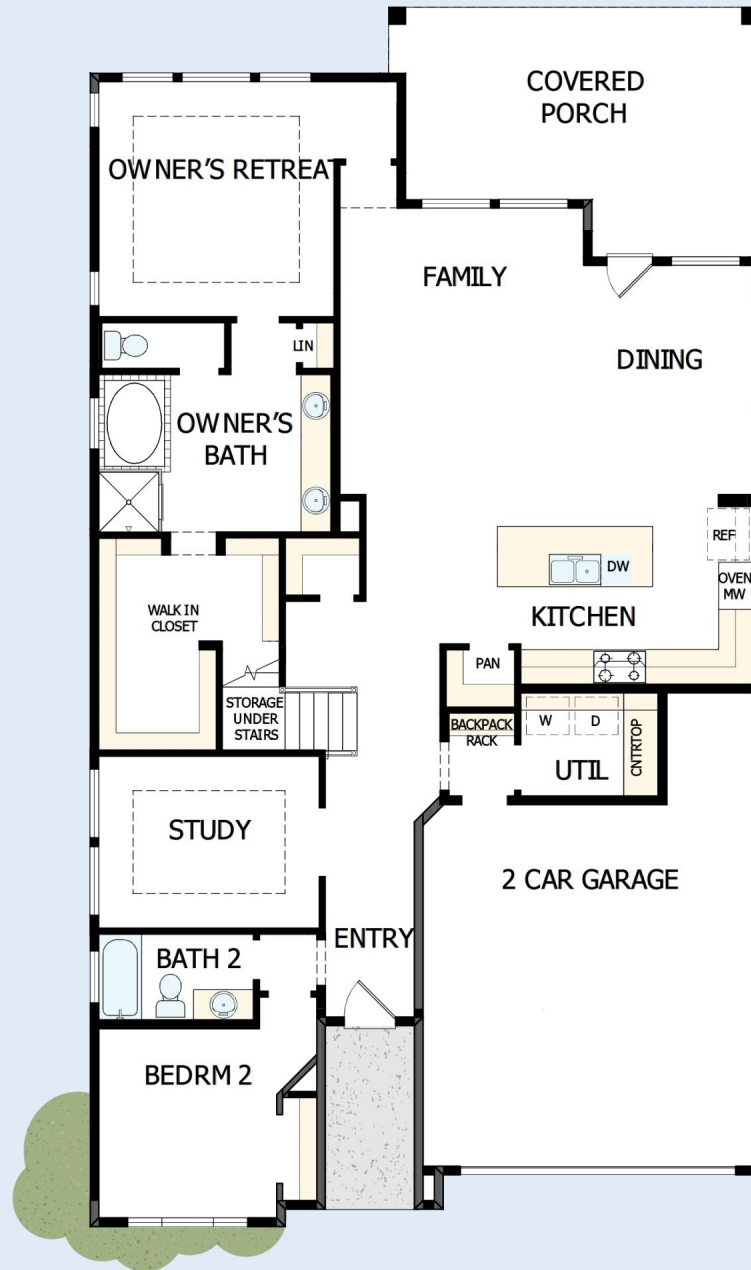
We have had several homes built in the past by several homebuilders. Our experience with David Weekley was the best we have ever had. The attention to detail and the customer service were exceptional. Both our sales person and Project Manager kept us well informed and treated us like family. Thanks David Weekley

**David Weekley
Homes**

THE LANDOVER

6232 ESCARPMENT DRIVE

2,770 sq. ft. • 4 Bedrooms • 3 Full Baths • 2 Car Garage



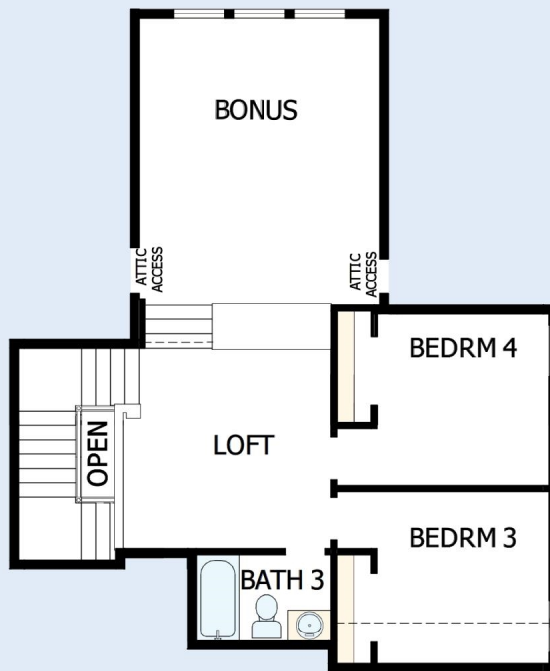
19440018 DAL

1/25/2024

DavidWeekleyHomes.com

THE LANDOVER

6232 ESCARPMENT DRIVE



See a David Weekley Homes Sales Consultant for details. Prices, plans, dimensions, features, specifications, materials, and availability of homes or communities are subject to change without notice or obligation. Illustrations are artist's depictions only and may differ from completed improvements. Copyright © 2024 David Weekley Homes - All Rights Reserved. Fr. Worth, TX

DavidWeekleyHomes.com



EQUAL HOUSING OPPORTUNITY