

SADDLEVIEW

705 HACKBERRY WAY



7529 ORL - A

Exterior A

2,776 sq. ft.

Bedrooms

Full Baths

1 Half Bath

2 Car Garage

Shane



We're living our fairytale thanks to David Weekley

We can't say enough about the level of quality and care we received while building our home. Our builder was with us every step of the way to make sure our every need and desire was being met! The team truly went above and beyond at every turn to give us the home of our dreams! We will definitely recommend David Weekley to anyone looking to build a new home!

Gigi and Papa



THE BESTest - Better than all the rest!

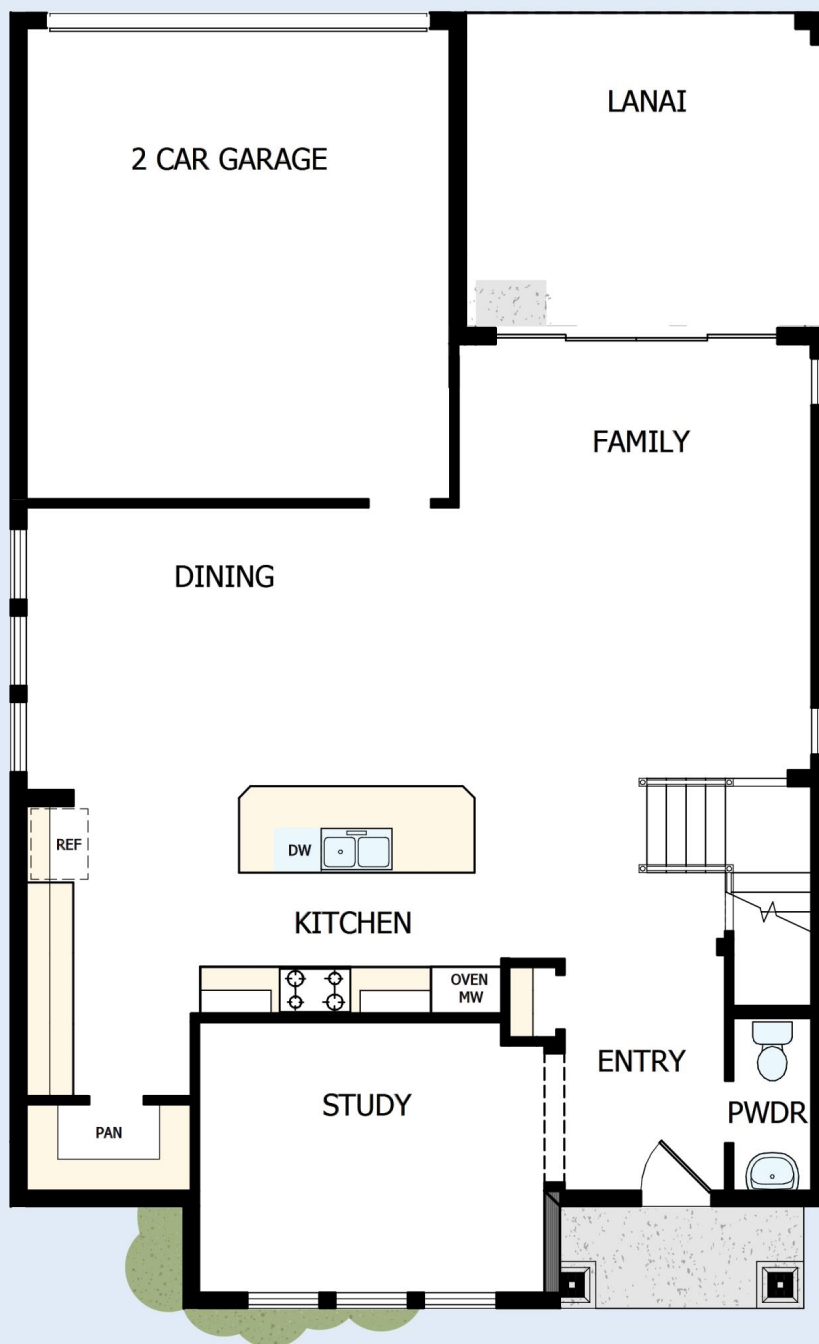
What an awesome and personal family-oriented company! From touring model homes to selecting "THE ONE" just for us, the experience was delightful and amazing! The entire David Weekley team has been exceptionally wonderful and always available to address any issues we encountered. We have been amazed and impressed by the "Service after the Sale" approach by the David Weekley staff. We would recommend David Weekley homes to anyone. We feel like we are an important member of the Weekley family!

David Weekley
Homes

SADDLEVIEW

705 HACKBERRY WAY

2,776 sq. ft. • Bedrooms • Full Baths • 1 Half Bath • 2 Car Garage



29900110 ORL

1/9/2020

DavidWeekleyHomes.com

SADDLEVIEW

705 HACKBERRY WAY



SADDLEVIEW

705 HACKBERRY WAY

OWNER'S
RETREAT

See a David Weekley Homes Sales Consultant for details.
Prices, plans, dimensions, features, specifications, materials,
and availability of homes or communities are subject to
change without notice or obligation. Illustrations are artist's
depictions only and may differ from completed improvements.
Copyright © 2020 David Weekley Homes - All Rights Reserved.
Lake Mary, FL

DavidWeekleyHomes.com

