

THE STEPHANI

13617 DEFIANCE PASS



Exterior B

2,107 sq. ft.

3 Bedrooms

3 Full Baths

1 Half Bath

2 Car Garage

Crystal W.



Welcome Home

My DWHomes experience has been truly 5-stars! From a floorplan concept, reserving a lot filled with dirt, the homebuilding project, to "Welcome Home", the entire process has been amazing. The team provided regular feedback and were always available to address questions and concerns. I was sold on the quality features. The entire team's availability and service has been exceptional before and after closing. Looking forward to enjoying our new home and neighbors for many years to come!

Meg S.



Truly treated us like family!!!

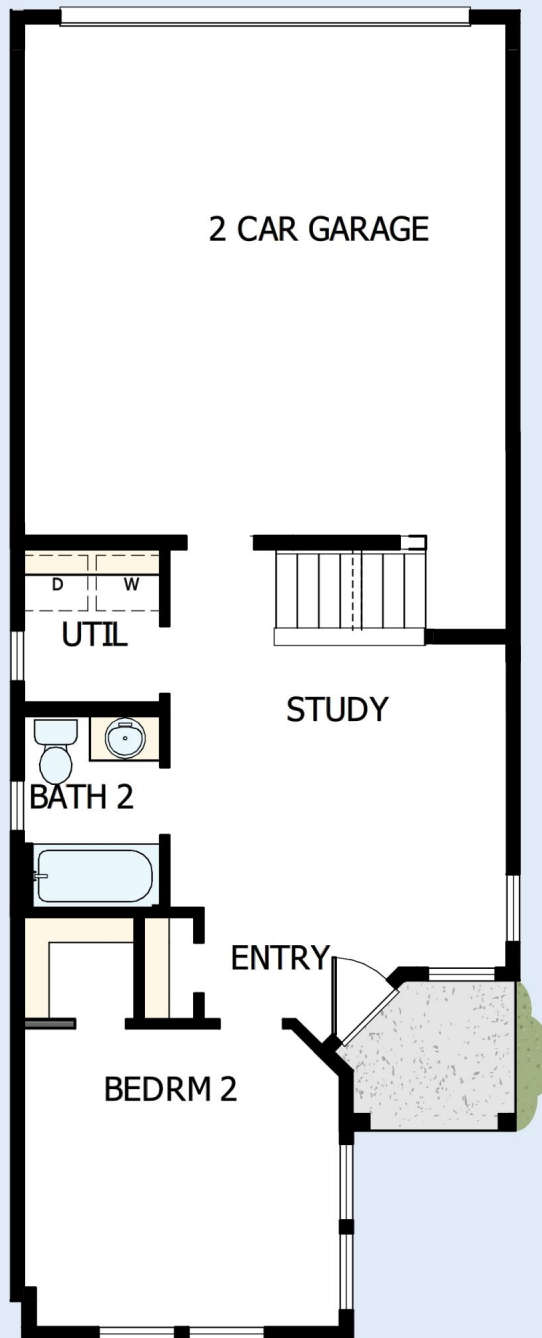
We enjoyed every part of the home building process. It was amazing! Our builder was always keeping us informed and really went above and beyond to ensure that we love our home. Our warranty rep is outstanding and continues to take care of our every need. I couldn't have asked for a better experience. Our builder and warranty rep continue to be there for us as a family. While our interactions with the DW Family have been highly professional, we are also lucky enough to be able to call them some of our greatest friends! Wouldn't change a thing!

CENTRAL LIVING
by David Weekley Homes

THE STEPHANI

13617 DEFIANCE PASS

2,107 sq. ft. • 3 Bedrooms • 3 Full Baths • 1 Half Bath • 2 Car Garage



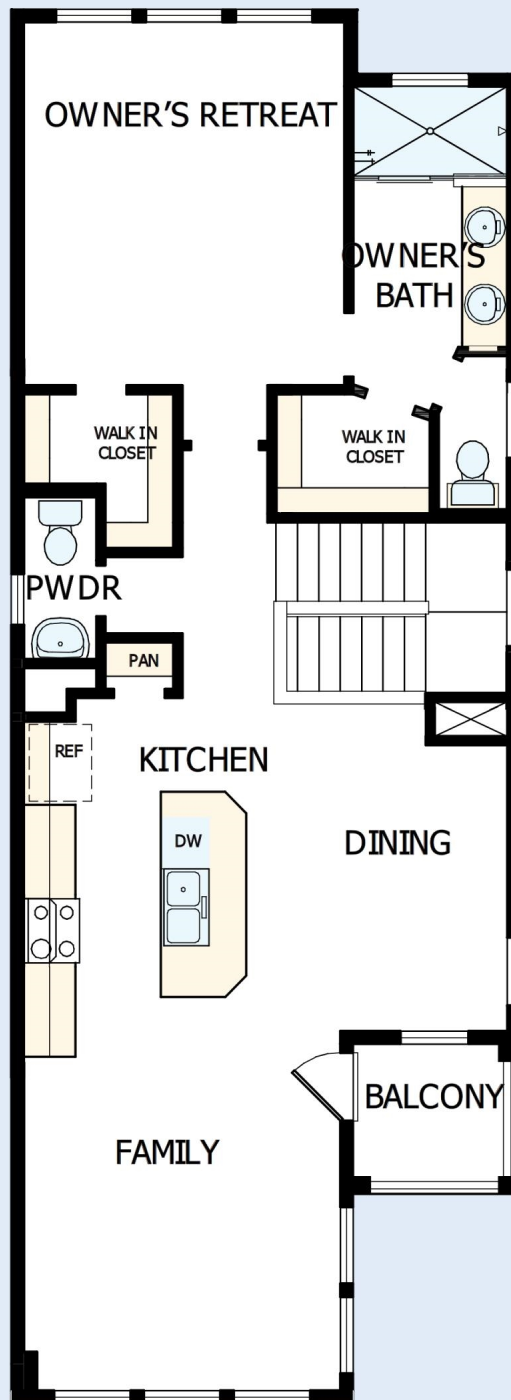
21740094 AUS

7/16/2021

CENTRAL LIVING
by David Weekley Homes

THE STEPHANI

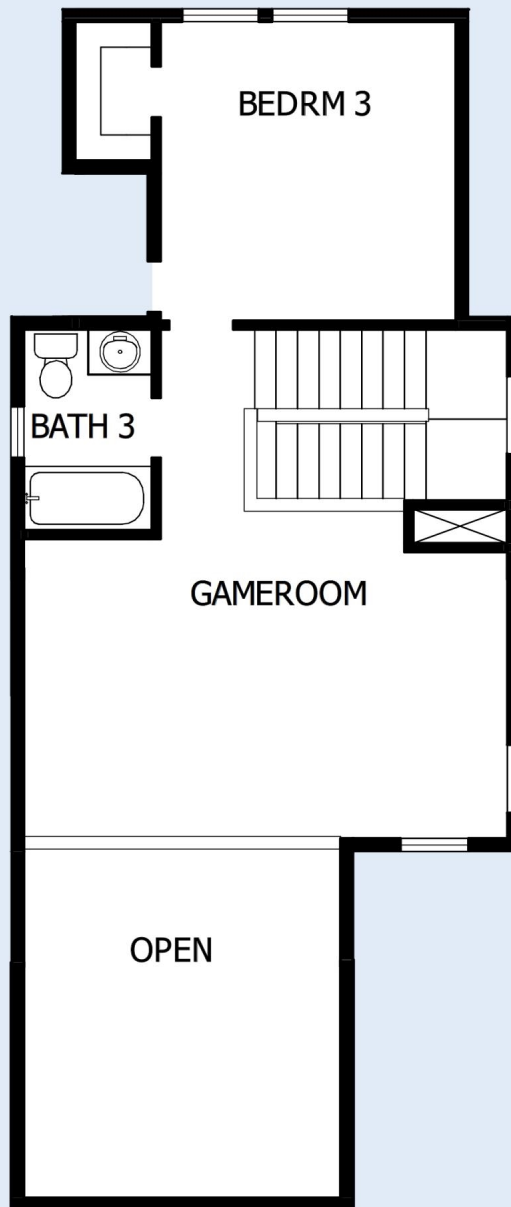
13617 DEFIANCE PASS



CENTRAL LIVING
by David Weekley Homes

THE STEPHANI

13617 DEFIANCE PASS



See a David Weekley Homes Sales Consultant for details. Prices, plans, dimensions, features, specifications, materials, and availability of homes or communities are subject to change without notice or obligation. Illustrations are artist's depictions only and may differ from completed improvements. Copyright © 2021 David Weekley Homes - All Rights Reserved. Austin, TX



CENTRAL LIVING
by **David Weekley Homes**