

# THE KINGSBRIDGE

28756 JUJUBE ROAD



Exterior A

2,511 sq. ft.

4 Bedrooms

2 Full Baths

1 Half Bath

3 Car Garage

## Shane



### We're living our fairytale thanks to David Weekley

We can't say enough about the level of quality and care we received while building our home. Our builder was with us every step of the way to make sure our every need and desire was being met! The team truly went above and beyond at every turn to give us the home of our dreams! We will definitely recommend David Weekley to anyone looking to build a new home!

## Crystal W.



### Welcome Home

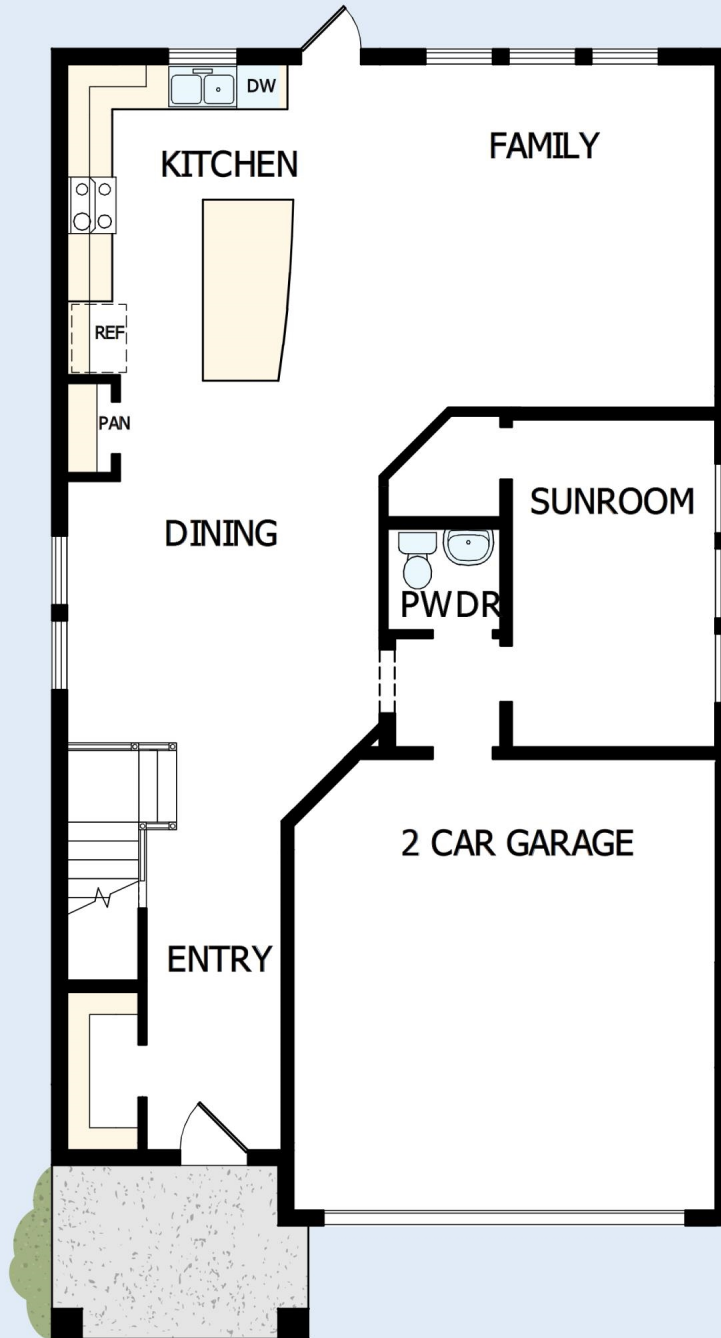
My DWHome's experience has been truly 5-stars! From a floorplan concept, reserving a lot filled with dirt, the homebuilding project, to "Welcome Home", the entire process has been amazing. The team provided regular feedback and were always available to address questions and concerns. I was sold on the quality features. The entire team's availability and service has been exceptional before and after closing. Looking forward to enjoying our new home and neighbors for many years to come!

David Weekley  
Homes

# THE KINGSBRIDGE

28756 JUJUBE ROAD

2,511 sq. ft. • 4 Bedrooms • 2 Full Baths • 1 Half Bath • 3 Car Garage



39200072 TAM

7/10/2024

DavidWeekleyHomes.com

# THE KINGSBRIDGE

28756 JUJUBE ROAD



See a David Weekley Homes Sales Consultant for details. Prices, plans, dimensions, features, specifications, materials, and availability of homes or communities are subject to change without notice or obligation. Illustrations are artist's depictions only and may differ from completed improvements. Copyright © 2024 David Weekley Homes - All Rights Reserved. Wesley Chapel, FL

**DavidWeekleyHomes.com**

