

THE MOOREFIELD

729 FLOWER MANOR DRIVE



Exterior C

2,415 sq. ft.

3 Bedrooms

3 Full Baths

2 Car Garage

Crystal W.



Welcome Home

My DWHomes experience has been truly 5-stars! From a floorplan concept, reserving a lot filled with dirt, the homebuilding project, to "Welcome Home", the entire process has been amazing. The team provided regular feedback and were always available to address questions and concerns. I was sold on the quality features. The entire team's availability and service has been exceptional before and after closing. Looking forward to enjoying our new home and neighbors for many years to come!

Gigi and Papa



THE BESTest - Better than all the rest!

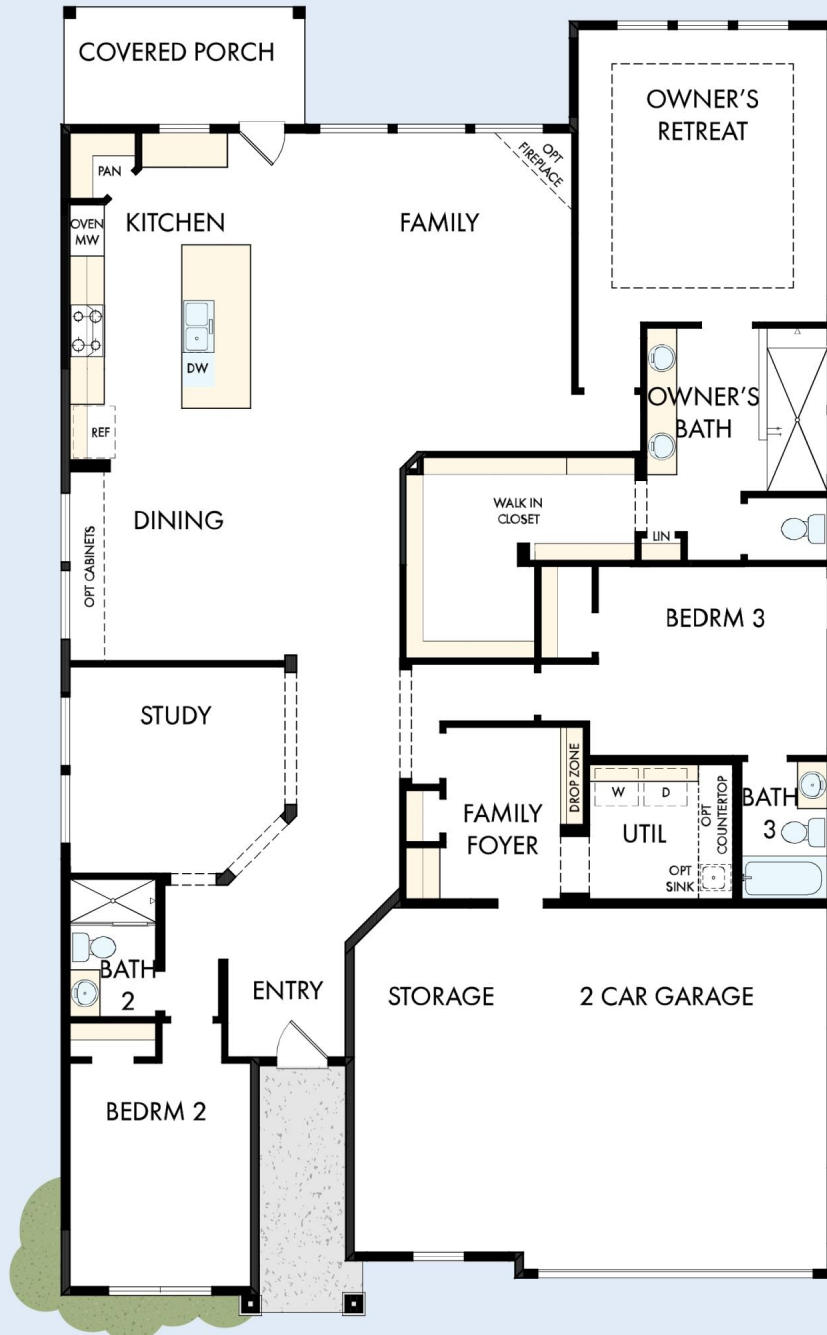
What an awesome and personal family-oriented company! From touring model homes to selecting "THE ONE" just for us, the experience was delightful and amazing! The entire David Weekley team has been exceptionally wonderful and always available to address any issues we encountered. We have been amazed and impressed by the "Service after the Sale" approach by the David Weekley staff. We would recommend David Weekley homes to anyone. We feel like we are an important member of the Weekley family!

Encore
by David Weekley Homes

THE MOOREFIELD

729 FLOWER MANOR DRIVE

2,415 sq. ft. • 3 Bedrooms • 3 Full Baths • 2 Car Garage

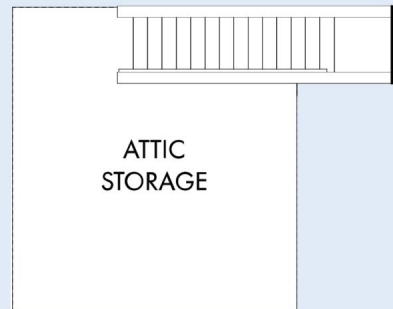


32781448 RAL

8/26/2024

THE MOOREFIELD

729 FLOWER MANOR DRIVE



See a David Weekley Homes Sales Consultant for details. Prices, plans, dimensions, features, specifications, materials, and availability of homes or communities are subject to change without notice or obligation. Illustrations are artist's depictions only and may differ from completed improvements. Copyright © 2024 David Weekley Homes - All Rights Reserved. Wendell, NC

Encore
by David Weekley Homes

