

THE SAW MILL

5602 PATHFINDER ROAD



Exterior G

2,852 sq. ft.

4 Bedrooms

3 Full Baths

2 Car Garage

Lauren L.



Home is where the heart is.

Years we waited to buy a house. Painful years of raising children in someone else's home. Years I got to ponder what it would be like to have something of my own. I envisioned my children sitting in their home, playing in their rooms, running through their yard...and the days of waiting were over, all of my research paid off. We bought the house of my dreams and were given the best sales associate and builder, down to my warranty specialist. Everything was easy and seamless. I felt like we were working together, like a team. Now, I have a beautiful house that I know was built with integrity. I could not be more grateful.

Perez Family



Best Homebuying Experience Ever

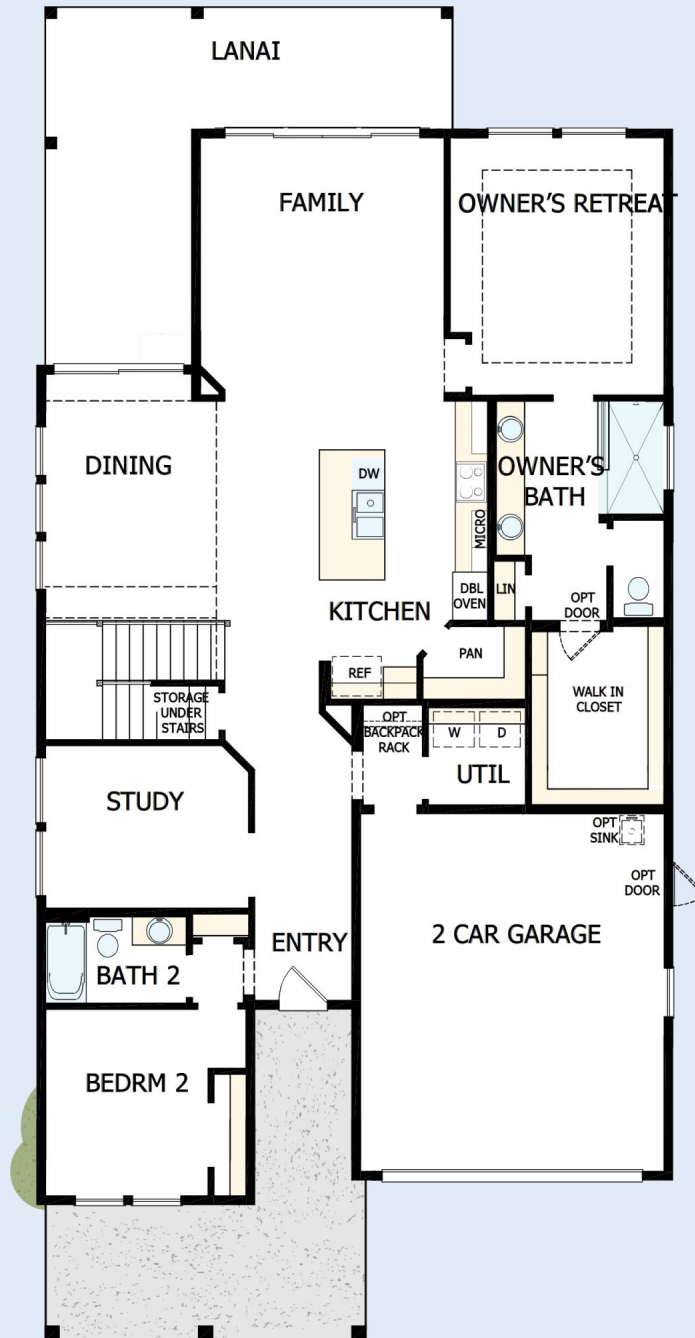
We have had several homes built in the past by several homebuilders. Our experience with David Weekley was the best we have ever had. The attention to detail and the customer service were exceptional. Both our sales person and Project Manager kept us well informed and treated us like family. Thanks David Weekley

David Weekley
Homes

THE SAW MILL

5602 PATHFINDER ROAD

2,852 sq. ft. • 4 Bedrooms • 3 Full Baths • 2 Car Garage



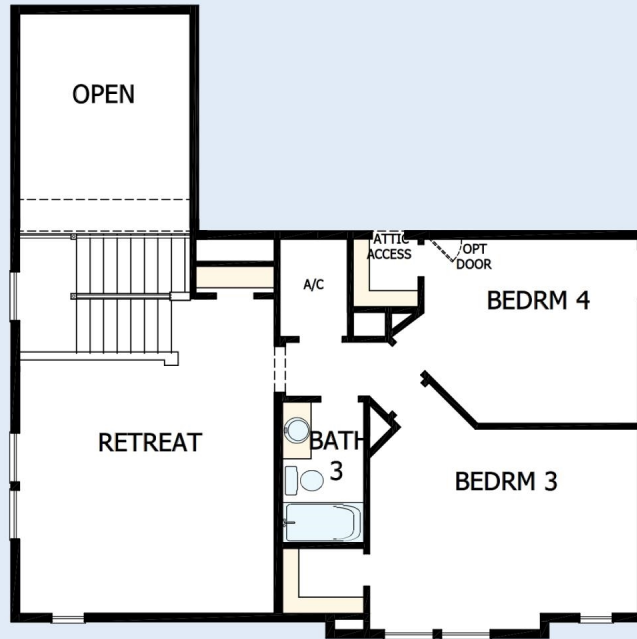
44940383 JAC

9/23/2024

DavidWeekleyHomes.com

THE SAW MILL

5602 PATHFINDER ROAD



See a David Weekley Homes Sales Consultant for details. Prices, plans, dimensions, features, specifications, material and availability of homes or communities are subject to change without notice or obligation. Illustrations are artist's depictions only and may differ from completed improvements. Copyright © 2024 David Weekley Homes - All Rights Reserved. Jacksonville, FL

DavidWeekleyHomes.com

