

# THE HEATHLEY

8385 SE KINNAMAN STREET



**Exterior B**

**1,332 sq. ft.**

**3 Bedrooms**

**2 Full Baths**

**1 Half Bath**

**1 Car Garage**

**Shane**



**We're living our fairytale thanks to David Weekley**

We can't say enough about the level of quality and care we received while building our home. Our builder was with us every step of the way to make sure our every need and desire was being met! The team truly went above and beyond at every turn to give us the home of our dreams! We will definitely recommend David Weekley to anyone looking to build a new home!

**Sandra A.**



**Best Builder Around**

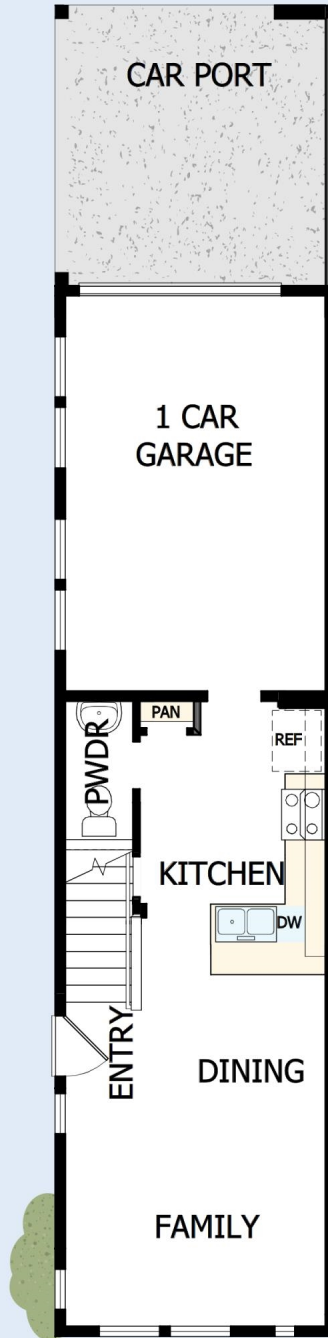
We have loved DW homes ever since our mother bought one. The quality of their work, attention to detail and willingness to respond to questions is top notch. The biggest thing we love about DW is their focus on customer service. They are not your typical builder who meets with you to get a check and forgets about you till walk thru. They are your partner through the entire process. Each step of the way they know they are building your dream house and really treat you like family. I would recommend them hands down. My husband sells real estate and has dealt with numerous builders around town. He always directs his clients to DW and signs their praises.

**David Weekley  
Homes**

# THE HEATHLEY

8385 SE KINNA MAN STREET

1,332 sq. ft. • 3 Bedrooms • 2 Full Baths • 1 Half Bath • 1 Car Garage



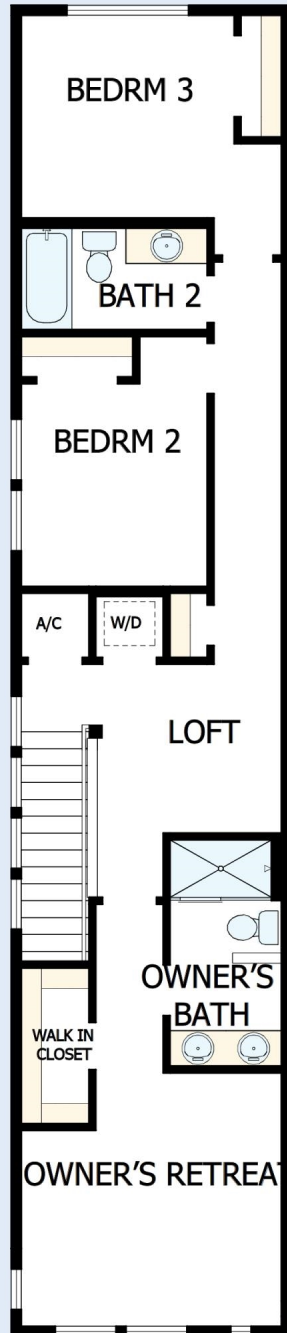
68031140 POR

10/3/2024

DavidWeekleyHomes.com

# THE HEATHLEY

8385 SE KINNA MAN STREET



See a David Weekley Homes Sales Consultant for details. Prices, plans, dimensions, features, specifications, material and availability of homes or communities are subject to change without notice or obligation. Illustrations are artist's depictions only and may differ from completed improvements. Copyright © 2024 David Weekley Homes - All Rights Reserved. Hillsboro, OR

DavidWeekleyHomes.com

