

# VUECREST

6308 W. FOLLY ISLAND WAY



Exterior E

1,589 sq. ft.

2 Bedrooms

2 Full Baths

3 Car Garage

## Sandra A.



### Best Builder Around

We have loved DW homes ever since our mother bought one. The quality of their work, attention to detail and willingness to respond to questions is top notch. The biggest thing we love about DW is their focus on customer service. They are not your typical builder who meets with you to get a check and forgets about you till walk thru. They are your partner through the entire process. Each step of the way they know they are building your dream house and really treat you like family. I would recommend them hands down. My husband sells real estate and has dealt with numerous builders around town. He always directs his clients to DW and signs their praises.

## Crystal W.

Atlanta, GA



### Welcome Home

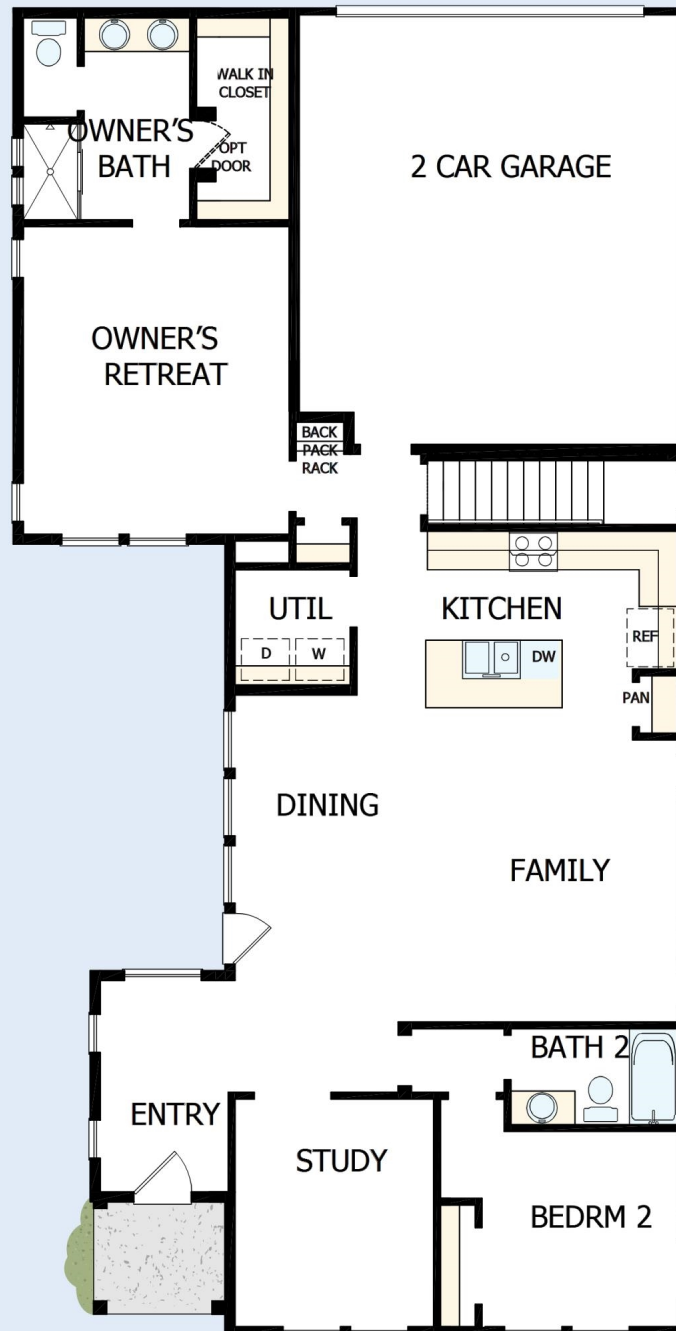
My DWHomes experience has been truly 5-stars! From a floorplan concept, reserving a lot filled with dirt, the homebuilding project, to "Welcome Home", the entire process has been amazing. The team provided regular feedback and were always available to address questions and concerns. I was sold on the quality features. The entire team's availability and service has been exceptional before and after closing. Looking forward to enjoying our new home and neighbors for many years to come!

David Weekley  
Homes

# VUECREST

6308 W. FOLLY ISLAND WAY

1,589 sq. ft. • 2 Bedrooms • 2 Full Baths • Half Baths • 3 Car Garage



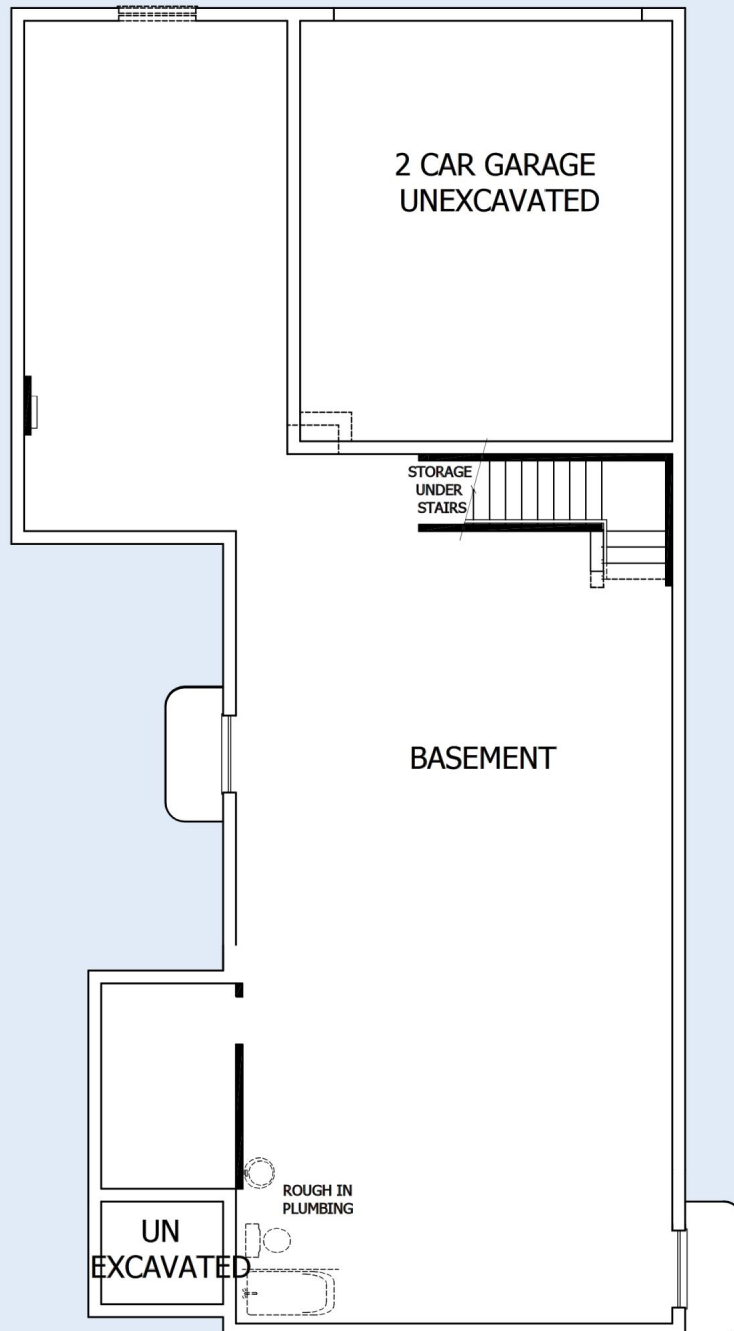
53160504 SLC

1/10/2020

DavidWeekleyHomes.com

# VUECREST

6308 W. FOLLY ISLAND WAY



See a David Weekley Homes Sales Consultant for details.  
Prices, plans, dimensions, features, specifications, materials,  
and availability of homes or communities are subject to  
change without notice or obligation. Illustrations are artist's  
depictions only and may differ from completed improvements.  
Copyright © 2020 David Weekley Homes - All Rights Reserved.  
South Jordan, UT

## DavidWeekleyHomes.com