

THE WESTLAKE

1511 PARK PATH DRIVE



Exterior D

1,520 sq. ft.

3 Bedrooms

2 Full Baths

3 Car Garage

Rich C.



Wonderful Experience!

If there is anything that sets David Weekley apart from other builders it is their customer service. I felt like a member of the family from the first time I walked into the model, to when I received my keys and saw the wonderful housewarming presents that were left for me, up to the present when I see my salesman in the neighborhood. I felt like they really took the time to understand what I was looking for and then came through with my dream home. I would highly recommend David Weekley to anyone looking to buy and/or build a home.

Crystal W.



Welcome Home

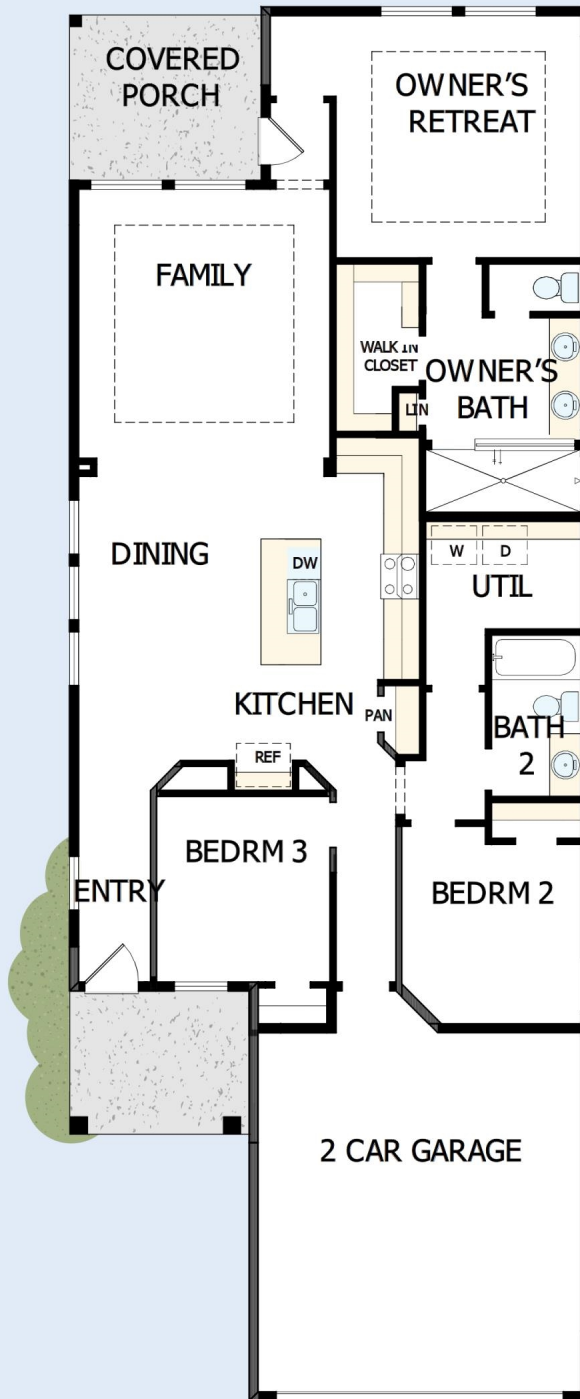
My DWHome experience has been truly 5-stars! From a floorplan concept, reserving a lot filled with dirt, the homebuilding project, to "Welcome Home", the entire process has been amazing. The team provided regular feedback and were always available to address questions and concerns. I was sold on the quality features. The entire team's availability and service has been exceptional before and after closing. Looking forward to enjoying our new home and neighbors for many years to come!

**David Weekley
Homes**

THE WESTLAKE

1511 PARK PATH DRIVE

1,520 sq. ft. • 3 Bedrooms • 2 Full Baths • 3 Car Garage



14590051 HOU

7/24/2024

See a David Weekley Homes Sales Consultant for details. Prices, plans, dimensions, features, specifications, materials, and availability of homes or communities are subject to change without notice or obligation. Illustrations are artist's depictions only and may differ from completed improvements. Copyright © 2024 David Weekley Homes - All Rights Reserved. Missouri City, TX

David Weekley Homes.com

