

THE PENINSULA

11562 S. DORIAN DRIVE



3,030 sq. ft.

5 Bedrooms

3 Full Baths

1 Half Bath

2 Car Garage

Exterior C

Perez Family



Best Homebuying Experience Ever

We have had several homes built in the past by several homebuilders. Our experience with David Weekley was the best we have ever had. The attention to detail and the customer service were exceptional. Both our sales person and Project Manager kept us well informed and treated us like family. Thanks David Weekley

Greg and Jane



Exceptional service and experience!

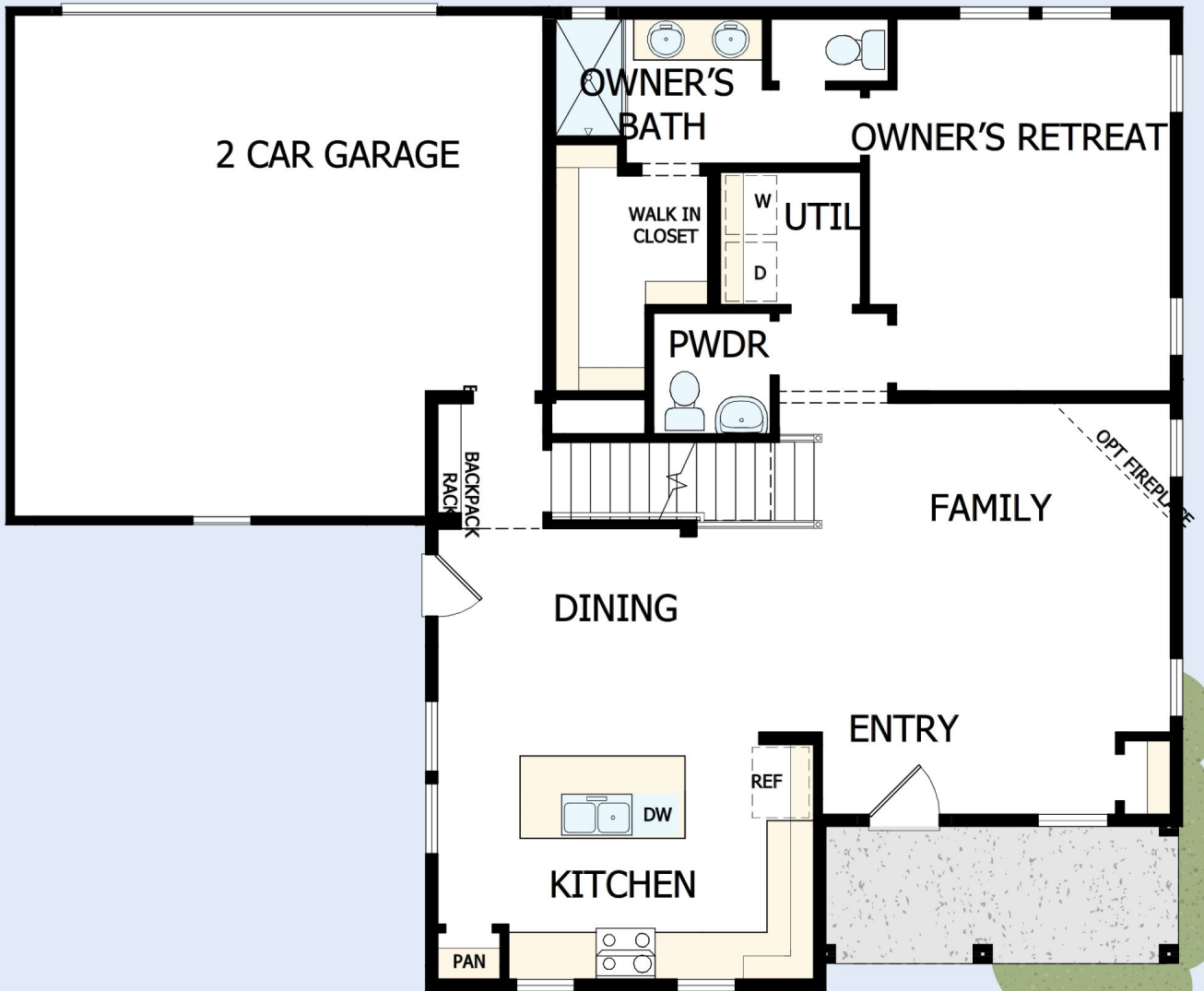
We have been fortunate enough to build several new homes and this was by far the best experience that we've encountered. We actually debated whether or not we wanted to go through the home building process again or simply purchase a pre-owned home or a finished new home. So pleased we built! Our Weekley team (sales associate, design consultant and builder) was very professional, courteous, attentive, responsive and pro-active from beginning to end. They've all become our adopted kids! Great overall experience!

David Weekley
Homes

THE PENINSULA

11562 S. DORIAN DRIVE

3,030 sq. ft. • 5 Bedrooms • 3 Full Baths • 1 Half Bath • 2 Car Garage



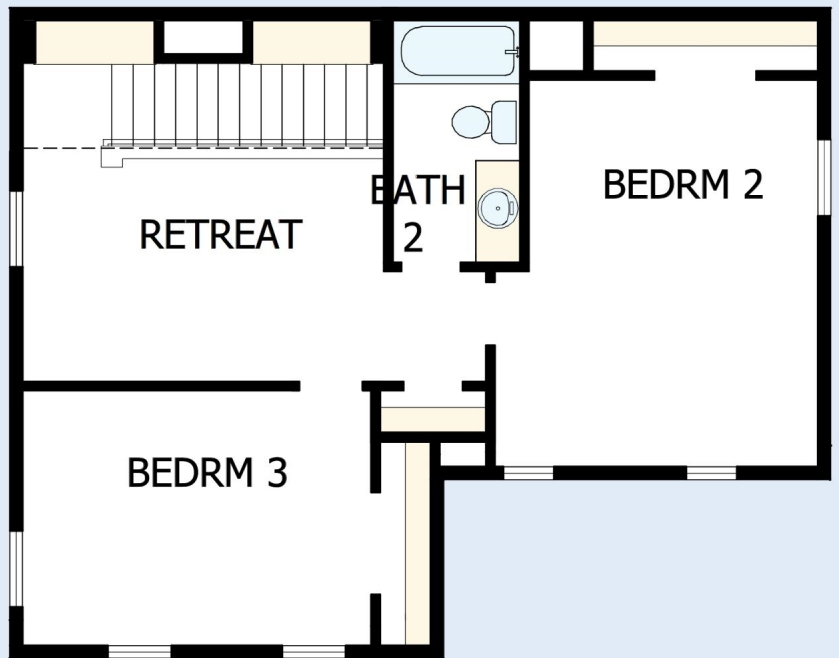
53200114 SLC

8/14/2024

DavidWeekleyHomes.com

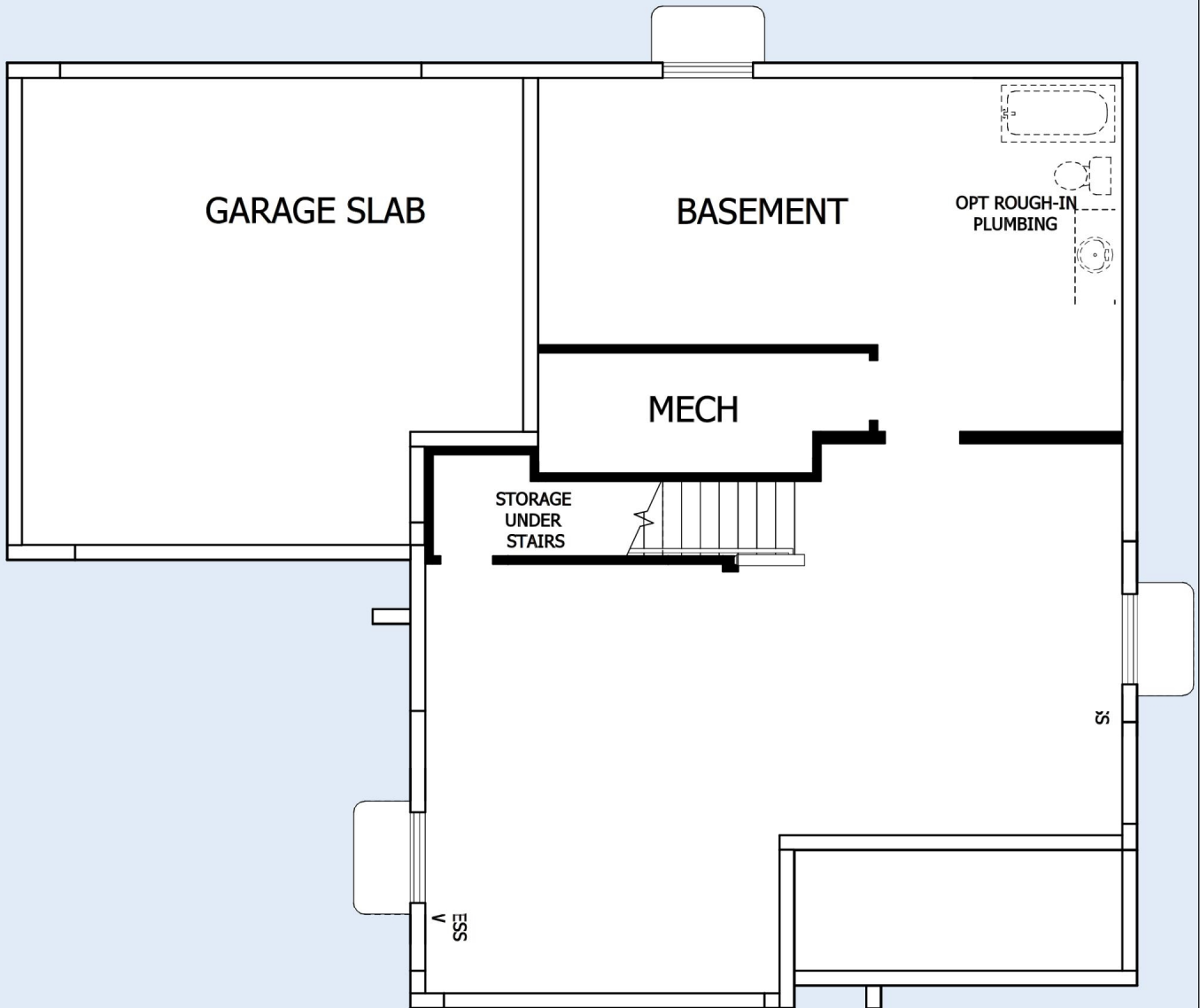
THE PENINSULA

11562 S. DORIAN DRIVE



THE PENINSULA

11562 S. DORIAN DRIVE



See a David Weekley Homes Sales Consultant for details. Prices, plans, dimensions, features, specifications, material and availability of homes or communities are subject to change without notice or obligation. Illustrations are artist's depictions only and may differ from completed improvements. Copyright © 2024 David Weekley Homes - All Rights Reserved. South Jordan, UT

DavidWeekleyHomes.com

