

# THE BERINGWOOD

1289 E. HOLLYHOCK WAY



Exterior D

3,966 sq. ft.

5 Bedrooms

3 Full Baths

3 Car Garage

## Greg and Jane



### Exceptional service and experience!

We have been fortunate enough to build several new homes and this was by far the best experience that we've encountered. We actually debated whether or not we wanted to go through the home building process again or simply purchase a pre-owned home or a finished new home. So pleased we built! Our Weekley team (sales associate, design consultant and builder) was very professional, courteous, attentive, responsive and pro-active from beginning to end. They've all become our adopted kids! Great overall experience!

## Lauren L.



### Home is where the heart is.

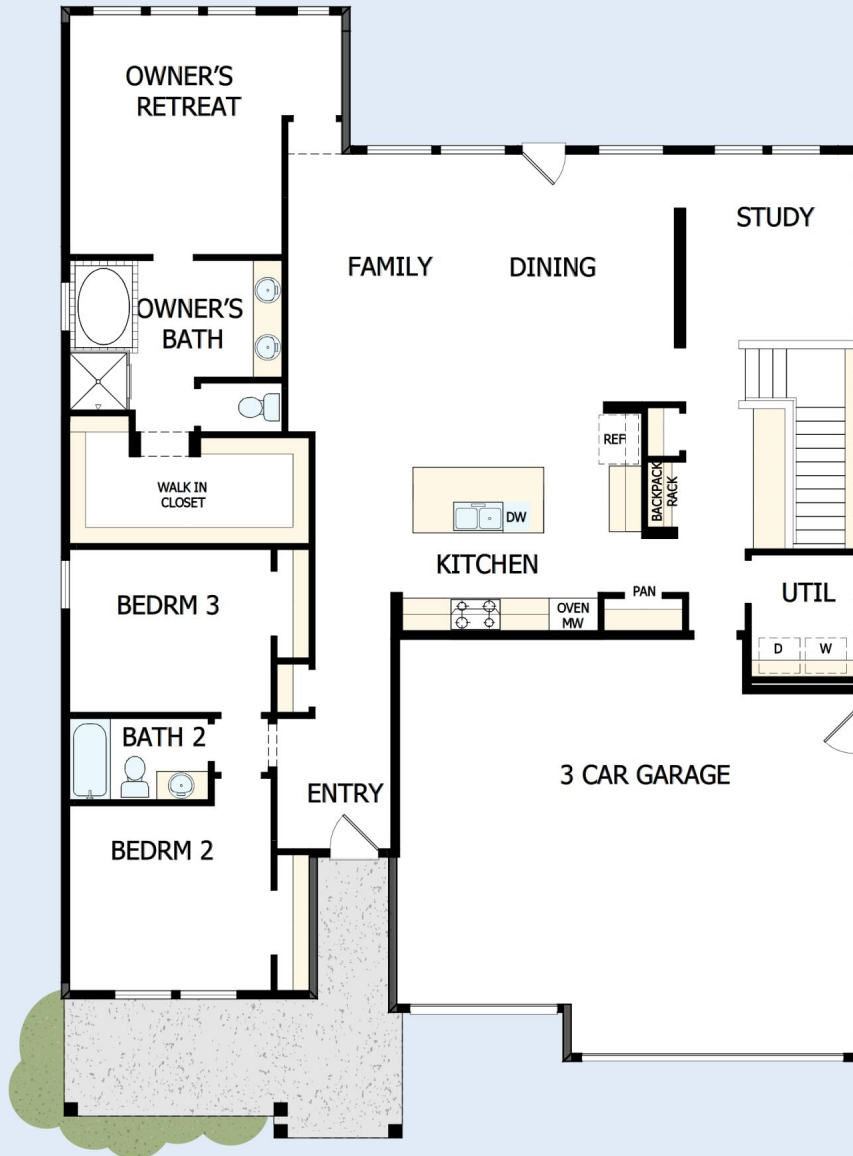
Years we waited to buy a house. Painful years of raising children in someone else's home. Years I got to ponder what it would be like to have something of my own. I envisioned my children sitting in their home, playing in their rooms, running through their yard...and the days of waiting were over, all of my research paid off. We bought the house of my dreams and were given the best sales associate and builder, down to my warranty specialist. Everything was easy and seamless. I felt like we were working together, like a team. Now, I have a beautiful house that I know was built with integrity. I could not be more grateful.

David Weekley  
Homes

# THE BERINGWOOD

1289 E. HOLLYHOCK WAY

3,966 sq. ft. • 5 Bedrooms • 3 Full Baths • 3 Car Garage



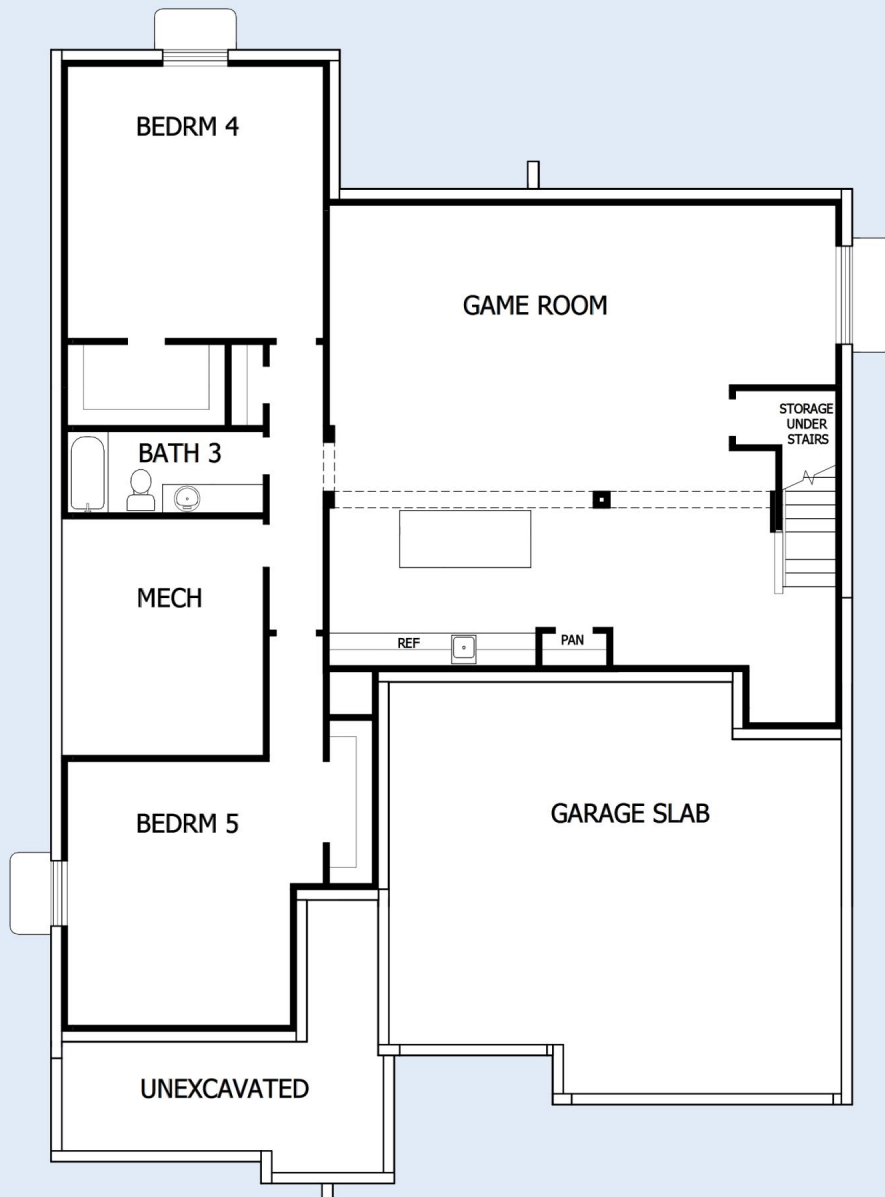
53400505 SLC

5/2/2024

DavidWeekleyHomes.com

# THE BERINGWOOD

1289 E. HOLLYHOCK WAY



See a David Weekley Homes Sales Consultant for details. Prices, plans, dimensions, features, specifications, materials, and availability of homes or communities are subject to change without notice or obligation. Illustrations are artist's depictions only and may differ from completed improvements. Copyright © 2024 David Weekley Homes - All Rights Reserved. Layton, UT

**DavidWeekleyHomes.com**



EQUAL HOUSING OPPORTUNITY