

THE ADAME

19036 PINWOOD GROVE TRAIL



6087 HOU - F

1,691 sq. ft.

3 Bedrooms

2 Full Baths

2 Car Garage

Exterior F

Perez Family



Best Homebuying Experience Ever

We have had several homes built in the past by several homebuilders. Our experience with David Weekley was the best we have ever had. The attention to detail and the customer service were exceptional. Both our sales person and Project Manager kept us well informed and treated us like family. Thanks David Weekley

Crystal W.



Welcome Home

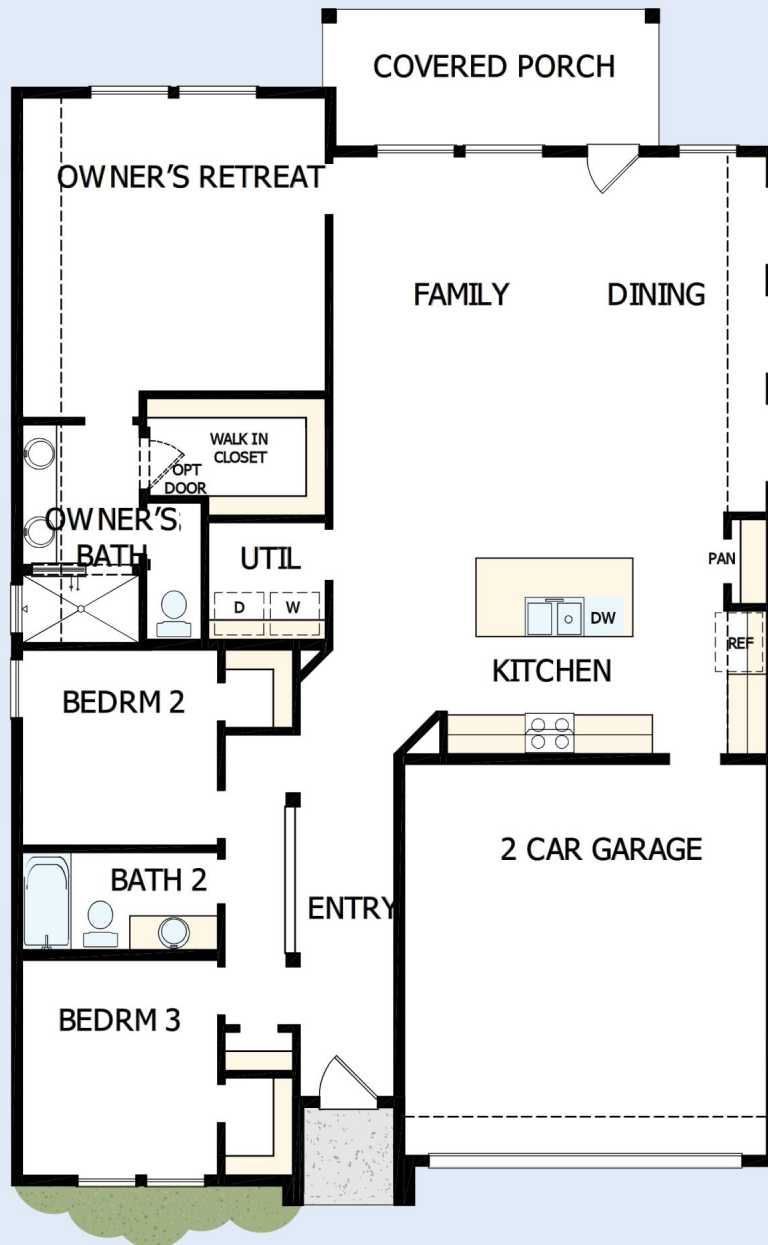
My DWHomes experience has been truly 5-stars! From a floorplan concept, reserving a lot filled with dirt, the homebuilding project, to "Welcome Home", the entire process has been amazing. The team provided regular feedback and were always available to address questions and concerns. I was sold on the quality features. The entire team's availability and service has been exceptional before and after closing. Looking forward to enjoying our new home and neighbors for many years to come!

Imagination
by David Weekley Homes

THE ADAME

19036 PINWOOD GROVE TRAIL

1,691 sq. ft. • 3 Bedrooms • 2 Full Baths • 2 Car Garage



14750024 HOU

3/15/2022



See a David Weekley Homes Sales Consultant for details. Prices, plans, dimensions, features, specifications, materials, and availability of homes or communities are subject to change without notice or obligation. Illustrations are artist's depictions only and may differ from completed improvements. Copyright © 2022 David Weekley Homes - All Rights Reserved. New Caney, TX

Imagination
by David Weekley Homes