

THE COHEN

3405 WORDSWORTH ROAD



Exterior A

3,049 sq. ft.

4 Bedrooms

4 Full Baths

1 Half Bath

3 Car Garage

Chelsea



Incredible Experience, Incredible Home!

We trusted the team from Day 1 and couldn't have asked for a better experience. The attention to detail was fantastic, and we felt as if the DWH team had a personal interest in the success of our home. The process was well defined and every team member set very clear expectations. We love every inch of our home, and we'd definitely recommend DWH!

Gigi and Papa



THE BESTest - Better than all the rest!

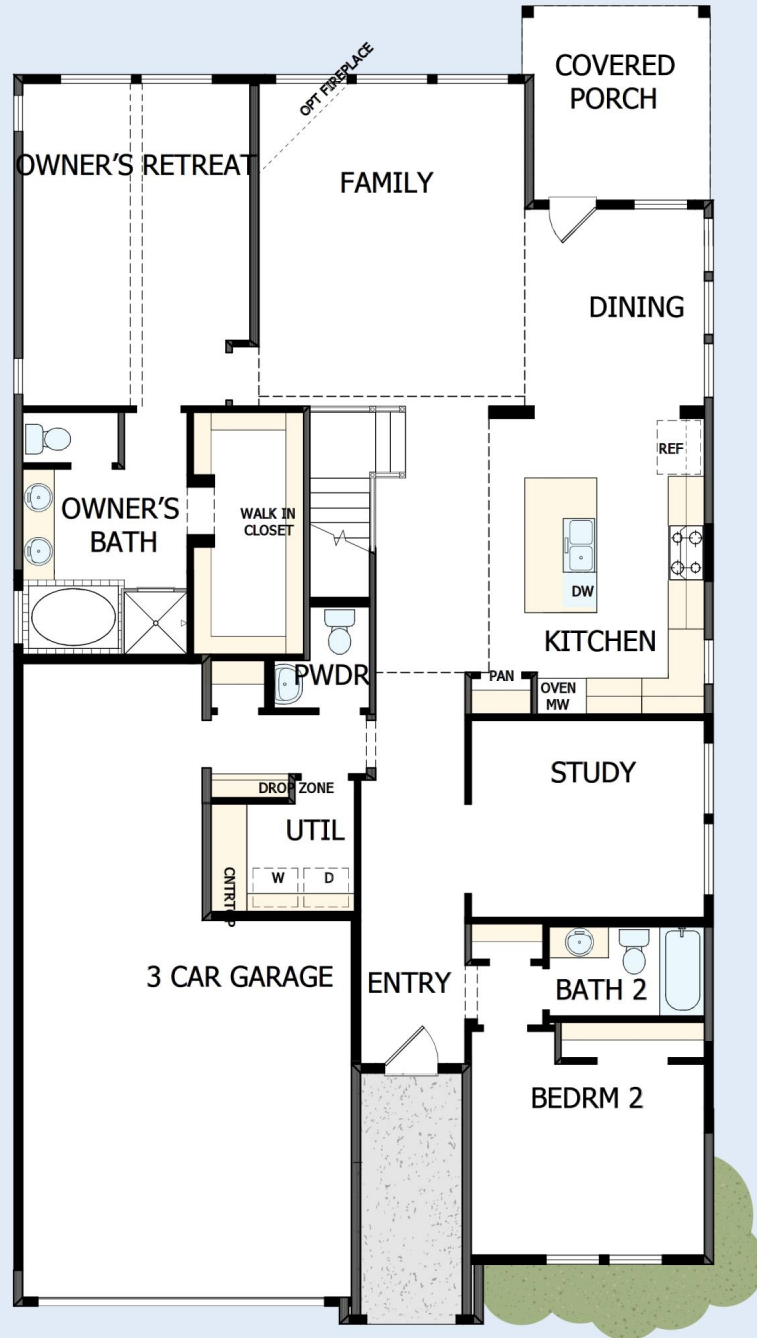
What an awesome and personal family-oriented company! From touring model homes to selecting "THE ONE" just for us, the experience was delightful and amazing! The entire David Weekley team has been exceptionally wonderful and always available to address any issues we encountered. We have been amazed and impressed by the "Service after the Sale" approach by the David Weekley staff. We would recommend David Weekley homes to anyone. We feel like we are an important member of the Weekley family!

**David Weekley
Homes**

THE COHEN

3405 WORDSWORTH ROAD

3,049 sq. ft. • 4 Bedrooms • 4 Full Baths • 1 Half Bath • 3 Car Garage



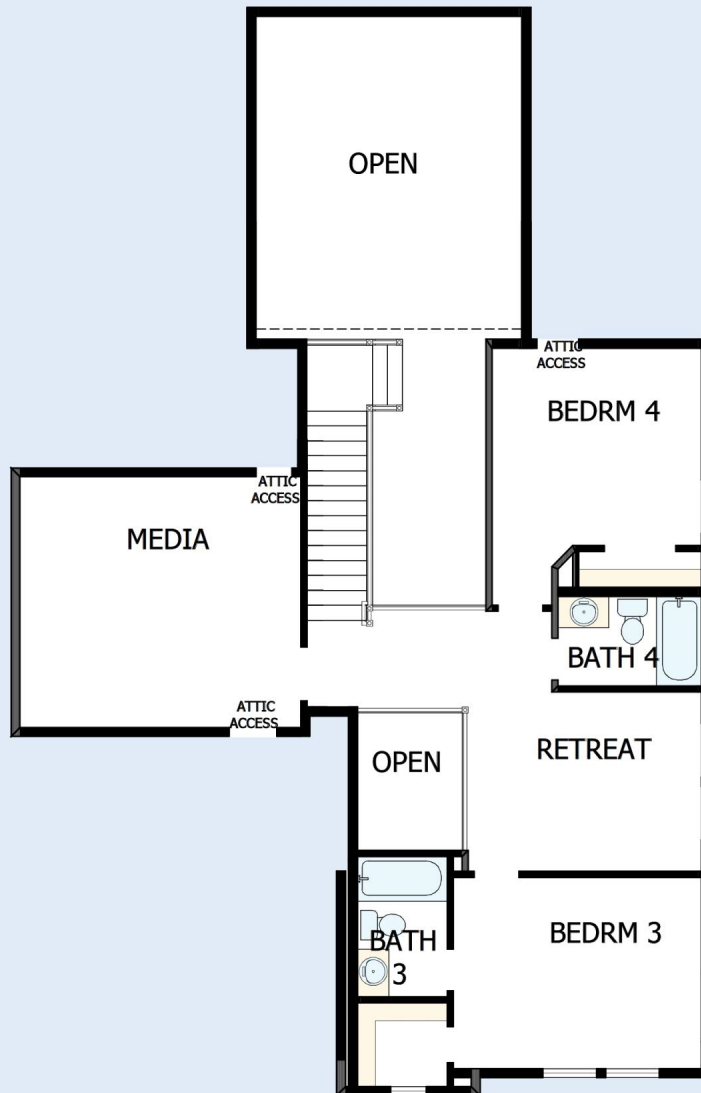
19540073 DAL

5/30/2024

DavidWeekleyHomes.com

THE COHEN

3405 WORDSWORTH ROAD



See a David Weekley Homes Sales Consultant for details. Prices, plans, dimensions, features, specifications, materials, and availability of homes or communities are subject to change without notice or obligation. Illustrations are artist's depictions only and may differ from completed improvements. Copyright © 2024 David Weekley Homes - All Rights Reserved. McKinney, TX

DavidWeekleyHomes.com

