

# THE PIN OAK

1608 NARITA BEND LANE



3640 DAL - C

Exterior C

3,248 sq. ft.

4 Bedrooms

3 Full Baths

2 Car Garage

**Chelsea**



**Incredible Experience, Incredible Home!**

We trusted the team from Day 1 and couldn't have asked for a better experience. The attention to detail was fantastic, and we felt as if the DWH team had a personal interest in the success of our home. The process was well defined and every team member set very clear expectations. We love every inch of our home, and we'd definitely recommend DWH!

**Crystal W.**



**Welcome Home**

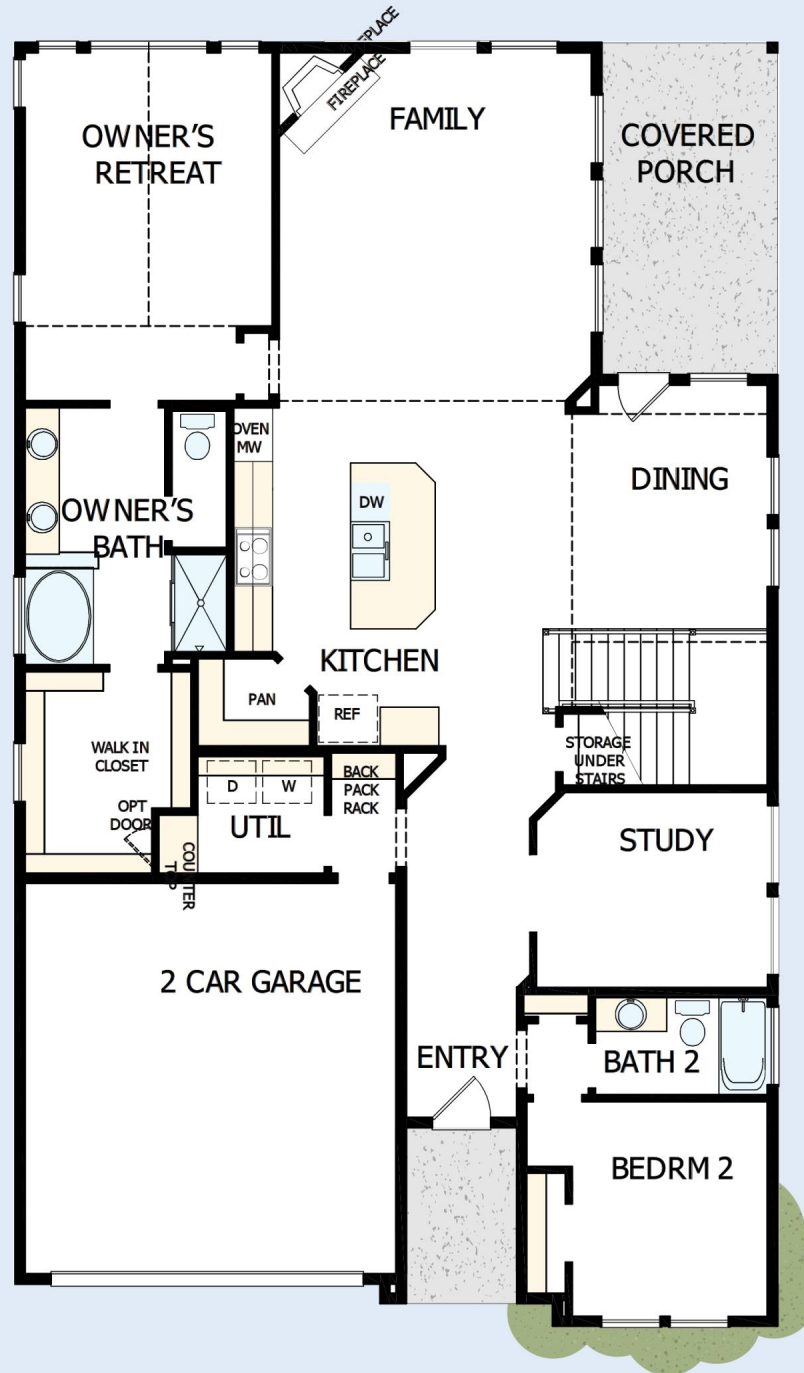
My DWHomes experience has been truly 5-stars! From a floorplan concept, reserving a lot filled with dirt, the homebuilding project, to "Welcome Home", the entire process has been amazing. The team provided regular feedback and were always available to address questions and concerns. I was sold on the quality features. The entire team's availability and service has been exceptional before and after closing. Looking forward to enjoying our new home and neighbors for many years to come!

**David Weekley  
Homes**

# THE PIN OAK

1608 NARITA BEND LANE

3,248 sq. ft. • 4 Bedrooms • 3 Full Baths • 2 Car Garage



18950143 DAL

2/14/2022

DavidWeekleyHomes.com

# THE PIN OAK

1608 NARITA BEND LANE



See a David Weekley Homes Sales Consultant for details. Prices, plans, dimensions, features, specifications, materials, and availability of homes or communities are subject to change without notice or obligation. Illustrations are artist's depictions only and may differ from completed improvements. Copyright © 2022 David Weekley Homes - All Rights Reserved. Fort Worth, TX

**DavidWeekleyHomes.com**

