

# THE SWEETBAY

11102 MOTION CT



Exterior A

1,170 sq. ft.

2 Bedrooms

2 Full Baths

1 Car Garage

## Crystal W.



### Welcome Home

My DWHome's experience has been truly 5-stars! From a floorplan concept, reserving a lot filled with dirt, the homebuilding project, to "Welcome Home", the entire process has been amazing. The team provided regular feedback and were always available to address questions and concerns. I was sold on the quality features. The entire team's availability and service has been exceptional before and after closing. Looking forward to enjoying our new home and neighbors for many years to come!

## Greg and Jane



### Exceptional service and experience!

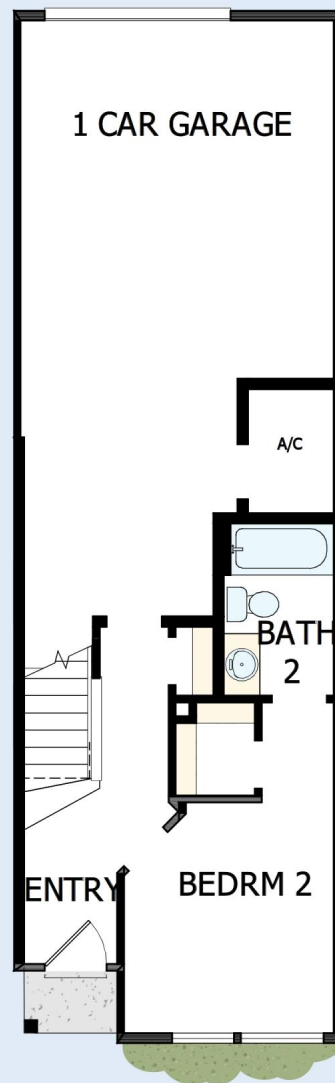
We have been fortunate enough to build several new homes and this was by far the best experience that we've encountered. We actually debated whether or not we wanted to go through the home building process again or simply purchase a pre-owned home or a finished new home. So pleased we built! Our Weekley team (sales associate, design consultant and builder) was very professional, courteous, attentive, responsive and pro-active from beginning to end. They've all become our adopted kids! Great overall experience!

David Weekley  
Homes

# THE SWEETBAY

11102 MOTION CT

1,170 sq. ft. • 2 Bedrooms • 2 Full Baths • 1 Car Garage



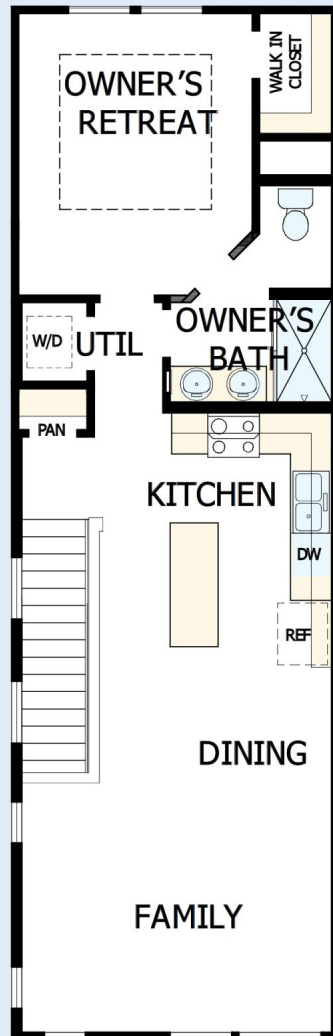
49080039 JAC

11/4/2022

DavidWeekleyHomes.com

# THE SWEETBAY

11102 MOTION CT



See a David Weekley Homes Sales Consultant for details.  
Prices, plans, dimensions, features, specifications, materials,  
and availability of homes or communities are subject to  
change without notice or obligation. Illustrations are artist's  
depictions only and may differ from completed improvements.  
Copyright © 2022 David Weekley Homes - All Rights Reserved.  
Jacksonville, FL

**DavidWeekleyHomes.com**