

# MADERA

6010 N. NETHERLAND COURT



6851 DEN - A

Exterior A

2,470 sq. ft.

Bedrooms

Full Baths

1 Half Bath

2 Car Garage

## Sandra A.



### Best Builder Around

We have loved DW homes ever since our mother bought one. The quality of their work, attention to detail and willingness to respond to questions is top notch. The biggest thing we love about DW is their focus on customer service. They are not your typical builder who meets with you to get a check and forgets about you till walk thru. They are your partner through the entire process. Each step of the way they know they are building your dream house and really treat you like family. I would recommend them hands down. My husband sells real estate and has dealt with numerous builders around town. He always directs his clients to DW and signs their praises.

## Gigi and Papa



### THE BESTest - Better than all the rest!

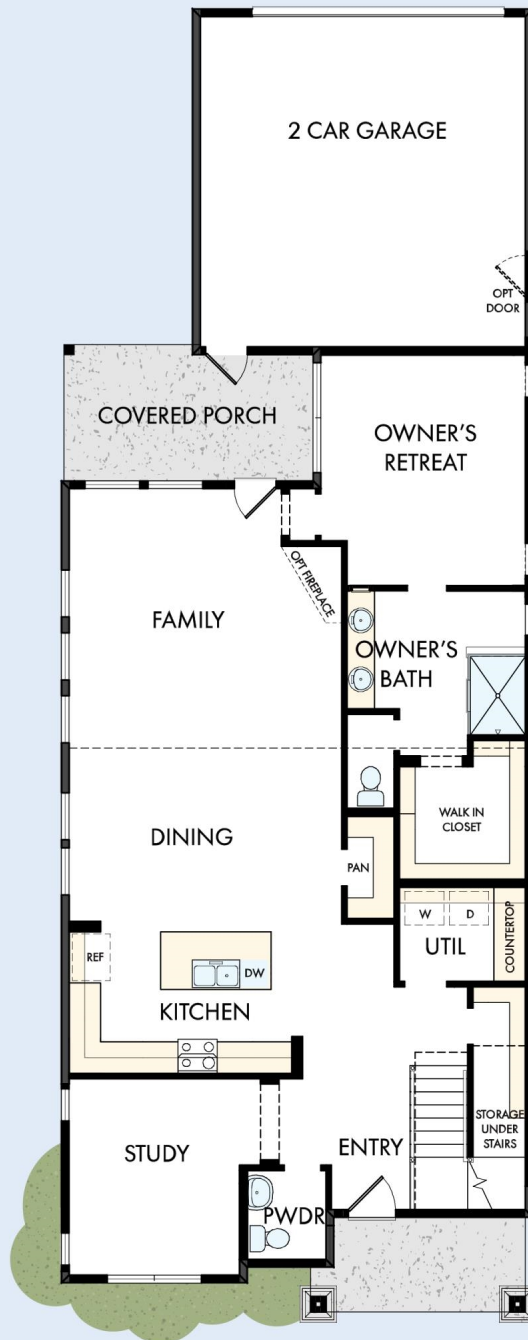
What an awesome and personal family-oriented company! From touring model homes to selecting "THE ONE" just for us, the experience was delightful and amazing! The entire David Weekley team has been exceptionally wonderful and always available to address any issues we encountered. We have been amazed and impressed by the "Service after the Sale" approach by the David Weekley staff. We would recommend David Weekley homes to anyone. We feel like we are an important member of the Weekley family!

David Weekley  
Homes

# MADERA

6010 N. NETHERLAND COURT

2,470 sq. ft. • Bedrooms • Full Baths • 1 Half Bath • 2 Car Garage



26550018 DEN

1/31/2020

DavidWeekleyHomes.com

# MADERA

6010 N. NETHERLAND COURT



See a David Weekley Homes Sales Consultant for details.  
Prices, plans, dimensions, features, specifications, materials,  
and availability of homes or communities are subject to  
change without notice or obligation. Illustrations are artist's  
depictions only and may differ from completed improvements.  
Copyright © 2020 David Weekley Homes - All Rights Reserved.  
Aurora, CO

**DavidWeekleyHomes.com**