

# MOUNTAINDALE

2591 N. 3200 WEST



6462 SLC - B

## Exterior B

2,619 sq. ft.

Bedrooms

Full Baths

1 Half Bath

Car Garage

### Crystal W.

Atlanta, GA



### Welcome Home

My DWHome experience has been truly 5-stars! From a floorplan concept, reserving a lot filled with dirt, the homebuilding project, to "Welcome Home", the entire process has been amazing. The team provided regular feedback and were always available to address questions and concerns. I was sold on the quality features. The entire team's availability and service has been exceptional before and after closing. Looking forward to enjoying our new home and neighbors for many years to come!

### Jordan



### Greatly exceeded every expectation! A+++!

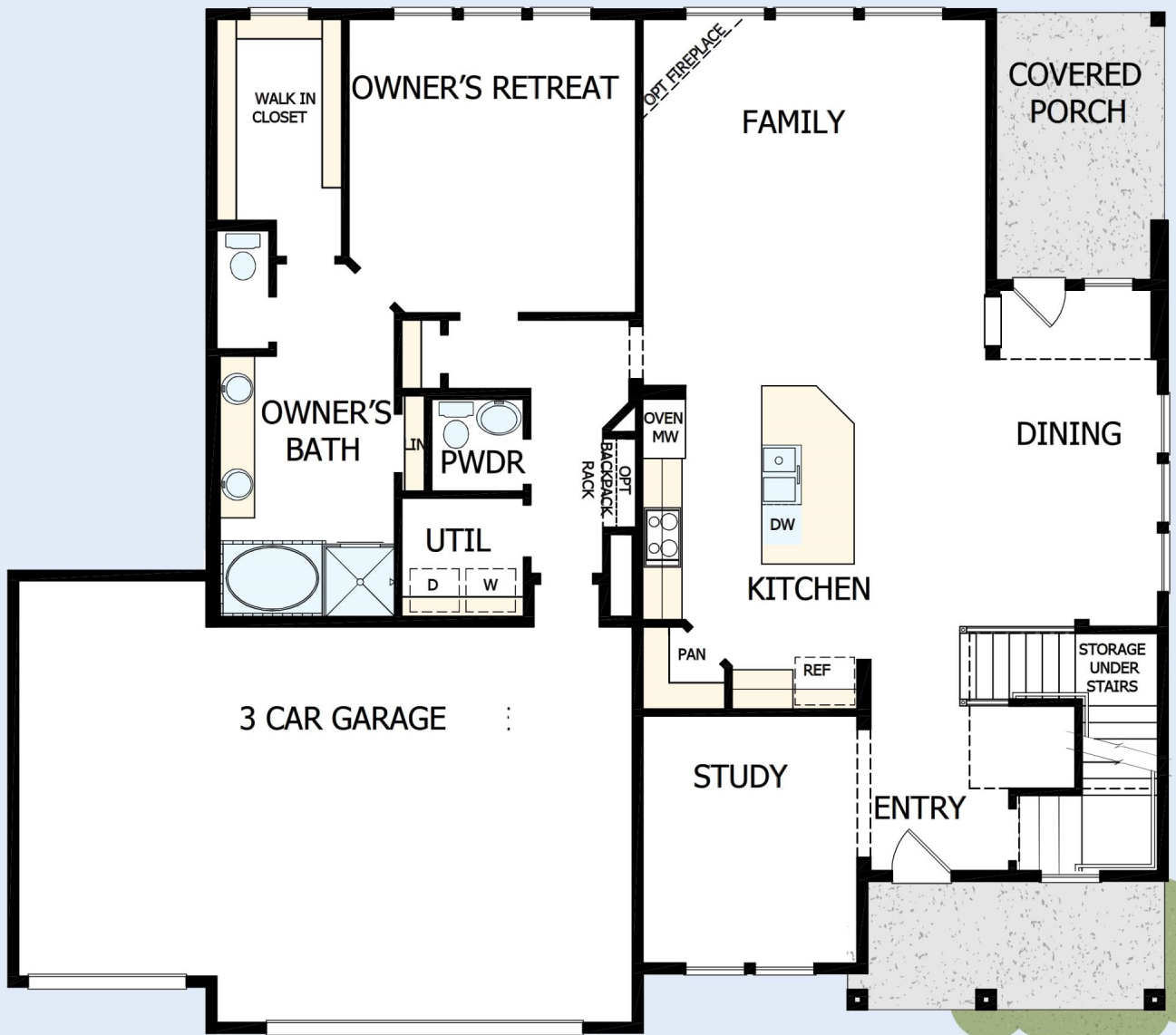
The entire experience was excellent from the first day I showed up to look at houses. The whole team came together to provide a truly quality house that I will be living in for years to come. Kajal helped me purchase the house and coordinated all meetings. She was very cheerful and professional at all times and I could tell that she cared about her clients and my family. Jeff and Robbie were builders that always went the extra mile to ensure total customer satisfaction. Jeff was very helpful and I am grateful to his management and know that I will be moving in to a house that is built right with a great attention to detail... Ashley also provided Kajal with assistance whenever Kajal was not available. I could not be happier with everyone involved in building this house. David Weekley is a great company and I would enthusiastically recommend them to others needing a quality house built in the future. Thank you for such a great experience and I hope that this company continues to grow.

**David Weekley  
Homes**

# MOUNTAINDALE

2591 N. 3200 WEST

2,619 sq. ft. • Bedrooms • Full Baths • 1 Half Bath • Car Garage



53140104 SLC

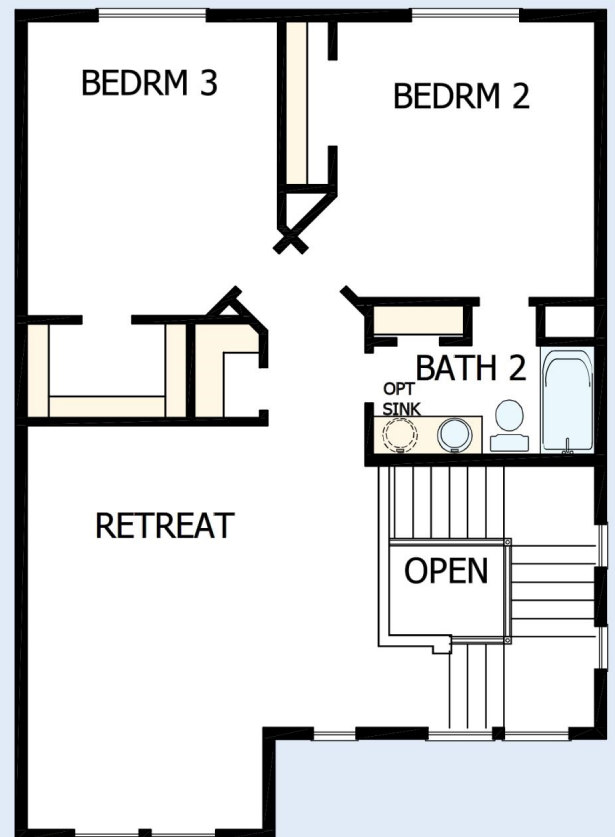
1/10/2020

DavidWeekleyHomes.com



# MOUNTAINDALE

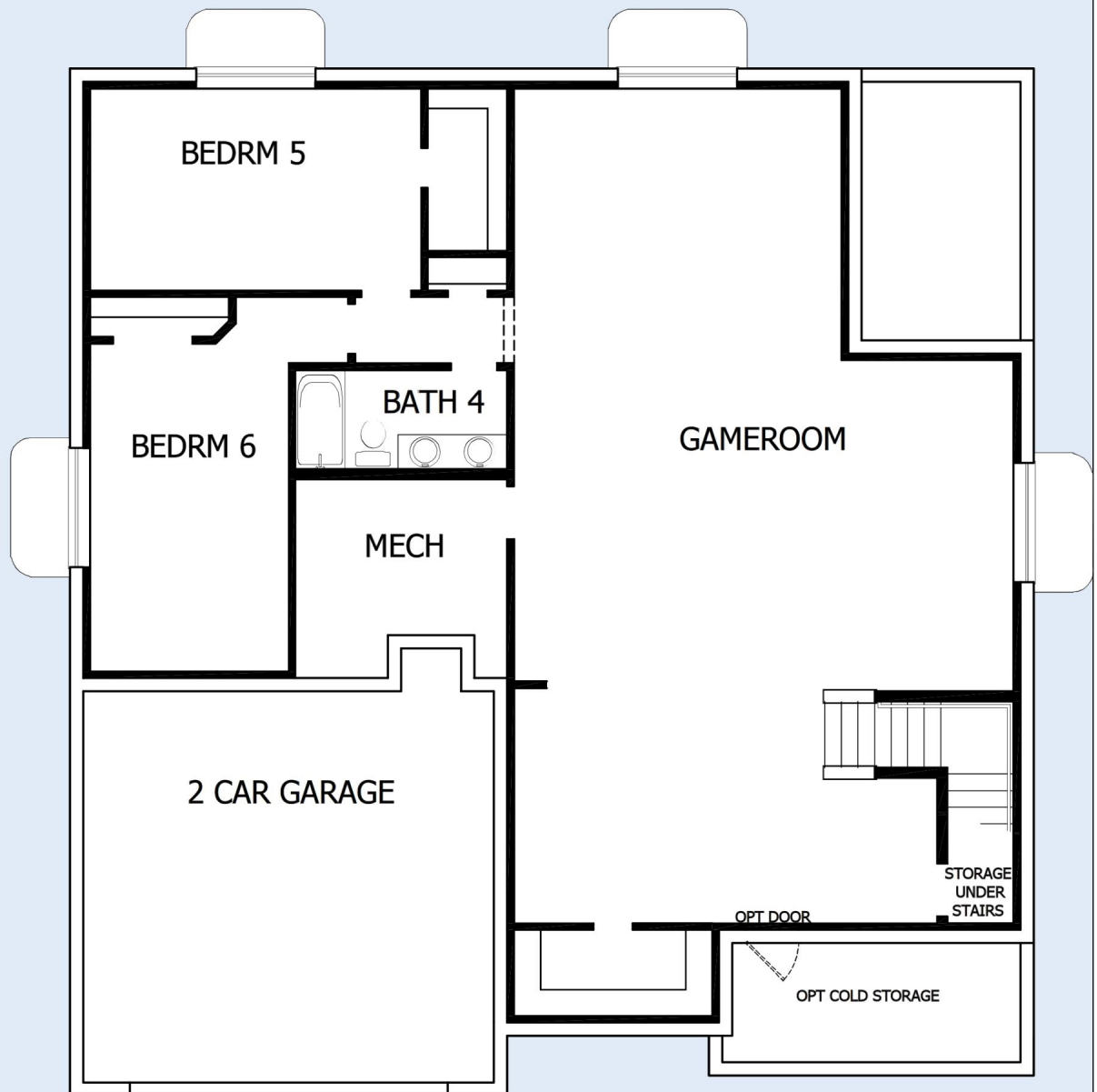
2591 N. 3200 WEST



[DavidWeekleyHomes.com](http://DavidWeekleyHomes.com)

# MOUNTAINDALE

2591 N. 3200 WEST



See a David Weekley Homes Sales Consultant for details. Prices, plans, dimensions, features, specifications, materials, and availability of homes or communities are subject to change without notice or obligation. Illustrations are artist's depictions only and may differ from completed improvements. Copyright © 2020 David Weekley Homes - All Rights Reserved. Lehi, UT

**DavidWeekleyHomes.com**